

MoNA

Museum of Northwest Art



2019 ANNUAL REPORT



MISSION STATEMENT

The Museum of Northwest Art collects, preserves, interprets, and exhibits art created in the Pacific Northwest, supports artists, and strives to integrate art into the lives of all people.

COLLECTIONS & EXHIBITIONS

MoNA collects and exhibits contemporary art from across the Northwest, including Alaska, British Columbia, California, Idaho, Montana, Oregon and Washington.

EDUCATION

MoNA's Education Department provides an inclusive environment and stimulating programming that supports the development and expression of all people.

3 FROM THE BOARD

4 FROM THE EXECUTIVE DIRECTOR

5 BOARD & STAFF

6 EXHIBITIONS

8 EDUCATION

9 TESTIMONIALS

10 VOLUNTEERS & MONA STORE

11 ACQUISITIONS & FINANCIALS

12 SUPPORTERS

15 LEGACY SOCIETY

IMAGE — CB Bell Media, *The Art Legacy of Joan Kirkman* exhibition reception, June 2019

FROM THE BOARD

At the time of writing, we find ourselves in a very different world. This is a trying time and we have all been affected by what has transpired in the first few months of 2020.

There are a couple of changes to the 2019 Annual Report that we would like to make explicitly clear.

First, the Board of Trustees chose to forego an independent audit of the Museum's finances for 2019. Because of its operating budget, the Museum is not required by federal law to undergo an annual audit. The Board chose to realize the cost savings possible through eliminating an expense that was about 2% of the annual operating budget. Instead, we plan to conduct an audit on a triennial or quadrennial schedule. The Board believes this plan to be sustainable, given the detailed oversight that is provided by the Finance Committee.

Second, the financial data included in this year's report is presented differently. This is in response to multiple feedbacks that the Board received concerning the transparency of the financial reporting in the Annual Report. We are providing more raw numbers, and hope that this level of granularity increases the usefulness of this information and helps to strengthen your belief that the Museum is held to high professional standards.

Calendar year 2019 marked a major transition for the Museum. From a macroscopic perspective, the Museum finished with a surplus slightly over \$25,000. This is a remarkable evolution from the precipitous position that the current Board inherited towards the end of 2017. Still, whilst the macroscopic year-end result was positive, it must be noted that significant donations in 2019 were restricted, with some of these directed towards future infrastructure repairs and designated staffing. Consequently, income in 2019 was still below what was needed to fund basic operations; in other words, the Museum continued to leverage funds from the Seattle Foundation loan that originated in May of 2018.

The Board has grown according to plan, with currently ten members. Joanna Sikes continues as Executive Director. In 2019, the Museum had a remarkable slate of exhibitions. 2020 started off so very wonderfully, only to have this forward momentum curtailed by the Virus.

Still, the Museum will go forward. A corollary of the pandemic is that it encourages one to consider what is most important in their life. We are fortunate in the Northwest, and, especially in the Pacific Northwest, to be surrounded by natural beauty. This has sustained many of us during this difficult period. Simultaneously, this natural beauty is what inspires many of the artists that call this region their home. We appreciate the power of their art to communicate and share experiences, to transform where one is at the moment, to provide a respite from the daily news, and, indeed, to restore one's center of gravity.

There are many social causes that require our attention at this time. Still, if you are able, please consider giving to your Museum – all gifts are appreciated.

Sincerely,

The Board of Trustees

FROM THE EXECUTIVE DIRECTOR

2019 was a year of many accomplishments achieved through the support of donors, members, docents, volunteers, grantors, artists, and visitors; MoNA's community which believes in the power of art.

Thanks to the curatorship of Susan Parke, Director Emeritus, MoNA's galleries were once again filled with masterworks from the Permanent Collection. ***continuum...*** was a strong reminder of the mission of the Museum and a reconnect with its history. Guy Anderson, Max Benjamin, Doris Chase, Richard Gilkey, Morris Graves, Clayton James and Mark Tobey were among the over 40 artists in the show.

In contrast to the well-known careers of the artists in ***continuum...***, ***The Art and Legacy of Joan Kirkman*** was the artist's first museum exhibition. Known worldwide for her fashion illustrations, her 30-year career as a fine art painter was less known. The colorful paintings of women with vivid color and soft brush strokes were a stark contrast to the infinite detail of her fashion illustrations.

The thought provoking and intriguing art of Eve Deisher in ***Indicator*** brought visitors to the galleries to see a body of work of a creative lifetime. The fluidity of the movement of her figures on canvas, fabric and paper were personal and yet approachable. MoNA was privileged to be the first to host the full spectrum of her creativity.

MoNA Link continued to support the work of teachers through classroom participation and museum visits. **The Art and Science Camp** and **Early Enrichment** continued to reach children of various ages. The support of donors to the **Art Box Lending Library**, where teachers can receive art materials for their classroom, was overwhelming.

I want to express MoNA's appreciation and gratitude to everyone who has supported our programs, visited our galleries, participated on a school tour, attended the auction and donated to our funding appeals. All of the 2019 accomplishments could not have happened without you.

Sincerely,

Joanna Sikes
Executive Director

BOARD OF TRUSTEES

Joanne Fredrich, Ph.D.
President

Tom Bucknell
Vice President

Michelle Hurteau
Vice President

Catherine Wyman
Treasurer

Jacque Beamer
Secretary

Tom Beckwith

Meghan Dunlap-Rice

C.J. Ebert

Kathleen Faulkner

Candice Reid

Lorne Render

(Term concluded in March 2020)

STAFF

Joanna Sikes
Executive Director

TessaRose Petersen
Finance Director
Operations Assistant

Ellie Cross
Education Director

Kim Simon
Learning & Engagement Coordinator

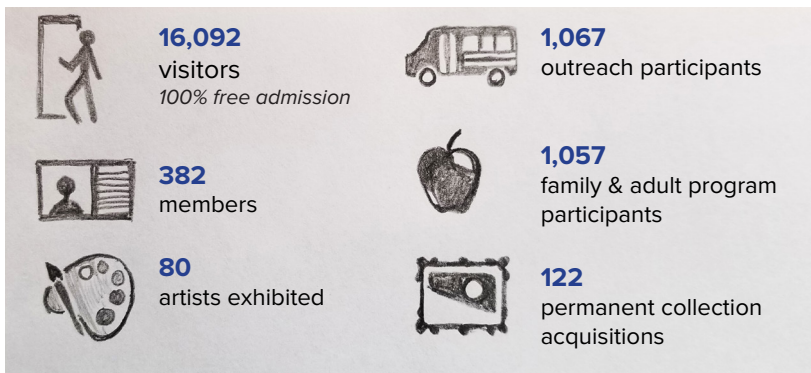
Marguerite Paul
Registrar

Brenda Brito
Development Associate

Martha Bufkin
Store Manager

Christina Pearson
Sales Associate

Marci Plank
Sales Associate



EXHIBITIONS 2019

WINTER JANUARY 19 – MARCH 24

LUMINARIES 2016 honored the four 2016 Luminaries award winners.

ARTISTS — Denzil Hurley, Saya Moriyasu, George Rodriguez, SuttonBeresCuller

SPELL OF THE WEST explored through the medium of dance the differences between the reality and the perception of life in the “Old West,” by contrasting George Balanchine’s idealization in his “*Western Symphony*” with the reality experienced at the time.

GUEST CURATOR — Lauren Carroll-Bolger, Rust Curatorial Fellow

ARTISTS — Ron Adams, Victoria Adams, Glen Alps, Guy Anderson, George Balanchine (video), Doris Chase, New York Ballet Company (video), Robert McCauley



IMAGE — George Rodriguez, *El Toro*, 2018, ceramic with glaze, courtesy of the artist

SPRING APRIL 6 – MAY 19

CONTINUUM... was an edited visual history of Northwest art from the 1930s to the present, and opened with works from the Museum’s permanent collection featuring the original NW Mystics, Guy Anderson, Kenneth Callahan, Morris Graves and Mark Tobey.

The upstairs exhibition explored the recent history with works generously lent by Herb and Lucy Pruzan from their extensive collection. The artists featured were Marita Dingus, Jeffry Mitchell, Julie Speidel, Akio Takamori and many more.

GUEST CURATOR — Susan Parke, Director Emeritus

ARTISTS — Tony Angell, Rich Araluce, Max Benjamin, Susan Bennerstrom, Mark Bennion, Lanny Bergner, Jeffrey Bishop, Sonja Blomdahl, Doris Chase, Sherrill Van Cott, William Cumming, Francis Celentano, Nathan DiPietro, Jed Dunkerley, Robert A. Flynn, Russell Frost, Richard Gillkey, Lisa Gilley, Joseph Goldberg, Gregory Grenon, Gaylen Hansen, Paul Havas, Paul Heald, Paul Horiuchi, Jan Hoy, William Ivey, Barbara Straker James, Clayton James, Fay Jones, Robert C. Jones, Helmi Juononen, Ed Kamuda, Leo Kenney, Louise Kikuchi, Gwen Knight, Craig Langager, Jr., Jacob Lawrence, Norman Lundin, James Martin, Alden Mason, Anne Martin McCool, Philip McCracken, Nancy Mee, Charles Miller, Peter Millet, Joseph Park, George Rodriguez, Elizabeth Sandvig, Italo Scanga, Michael Spafford, Timea Tihanyi, Einar & Jamex de la Torre, Theodore Waddell, Jamie Walker, Patti Warashina, Dederick Ward, James Washington, Ron Wigginton, Lisa Zerkowitz



IMAGE — Morris Graves, *Spirit Bird*, 1950, tempera on paper; MoNA, gift of The Catterall Collection



IMAGE — Akio Takamori, *Sleeping Woman in Purple Dress*, 2013, stoneware with underglazes, courtesy of Herb and Lucy Pruzan

SUMMER JUNE 22 – SEPTEMBER 22

CONTINUUM... CONTINUED was the next chapter of *continuum...* which explored the works of the NW Mystics and their acolytes and younger contemporaries, Richard Gilkey, Paul Horiuchi, Clayton and Barbara James, Leo Kenney, Philip McCracken and others.

GUEST CURATOR — Susan Parke, Director Emeritus

ARTISTS — Tony Angell, Mark Bennion, Lanny Bergner, Sherrill Van Cott, William Cumming, Russell Frost, Joseph Goldberg, Paul Havas, Paul Heald, Jan Hoy, Helmi Juvonen, Ed Kamuda, Louise Kikuchi, Craig Langager, James Martin, Alden Mason, Theodore Waddell, Dederick Ward, James Washington, Jr., Ron Wigginton

JUNE 22 – JANUARY 11, 2020

THE ART & LEGACY OF JOAN KIRKMAN was a retrospective of an artist known as one of the most respected fashion illustrators in the country, illustrating for some of the best known Seattle stores of her day: Best, Frederick and Nelson, The Bon Marche, and I. Magnin. This exhibition showcased works from a thirty-year history as a fine art painter, a fact that was known to few other than her family. The beautiful impressionist style of her never before exhibited paintings filled the gallery with color.

FASHION ILLUSTRATION GUEST CURATOR —
Carla Bucknell

CURATOR — Joanna Sikes



IMAGE — Joan Kirkman, *Untitled*, no date, oil on canvas, courtesy of the Kirkman Family

AUTUMN OCTOBER 5 – JANUARY 11, 2020

EVE DEISHER: INDICATOR was a retrospective featuring visual artist Eve Deisher's drawings and mixed-media fiber works created from 1982–2015. Eve moved to Fidalgo Island with her husband, sculptor Lanny Bergner, in 1994. She began teaching art at Skagit Valley College in 1995. She continued to teach there until 2017, quietly developing a significant body of work, twenty-six of which were featured in the exhibition.

GUEST CURATOR — Lanny Bergner

IMAGE — Eve Deisher, *Breathe*, 2012, fabric, felt, thread, leaves, buttons, charcoal on paper, courtesy of Lanny Bergner



EDUCATION

THANK YOU

The Education Department thanks all of the generous donors and volunteers that allow us to create stimulating programming that supports our community's development and expression.

MoNA LINK

MoNA Link provides comprehensive art education for students from pre-K to high school, in school districts throughout Skagit, Whatcom, Snohomish and Island Counties. Since 2003, the program has served over 8,254 students and provided training for 157 teachers. As an additional resource for our teachers, MoNA launched the **Art Lesson Plan Database** in June 2019. This is a searchable online database that features more than 75 of MoNA's art lesson plans and is 100% free for everyone. These lesson plans have been developed and acquired throughout the many years of MoNA's Education Program, and we are thrilled to offer this valuable resource to teachers in our community. **(IMAGE BELOW — MoNA Link Teacher training session at the MoNA Art Studio)**



12
new MoNA
Moments
podcasts



338
family program
participants



719
adult program
participants



787
youth outreach
participants



280
adult outreach
participants



20
teaching artists
employed



75
new lessons
added to the
Art Lesson Plan
Database



FAMILY & YOUTH PROGRAMS

Family Programs, such as our **Art & Science Day Camp** and **Early Enrichment** classes, are designed to bring new visitors to the museum while providing dynamic new opportunities for arts engagement to repeat visitors.

ADULT PROGRAMS

Our Adult Programs include workshops that promote lifelong learning as well as talks, lectures, panels, dance performances and more. We record many of our Adult Programs on our podcast, **MoNA Moments**, which you can find on our website, monamuseum.org, iTunes and Soundcloud.

OUTREACH

Outreach programs provide greater access to shared cultural experiences for youth and adults in underserved communities throughout the region. In October 2019, we expanded our outreach by launching **The Art Box Lending Library**. This free resource provides art materials and sample art lessons for teachers who may not have art instructors or programs in their school. We thank Burlington-Edison Kiwanis, the Skagit Community Foundation, and all of the individual donors who made this resource possible.

OUTSIDE IN GALLERY

On January 19, 2019, thanks to funding from the Skagit Community Foundation and the US Bank Foundation, the Education Department opened the Outside In Gallery, a dedicated space that brings art from the local community to showcase on the Museum walls. In 2019, the Outside In Gallery showed four exhibitions: *Poetry by Past and Current Anacortes High School Students*, *MoNA Link Teachers' Artwork*, *Nature's Kinship Travels* (showcasing Docent Artwork), and *Student Value Studies*.

For more information about our education programs contact us at education@museumofnwart.org.

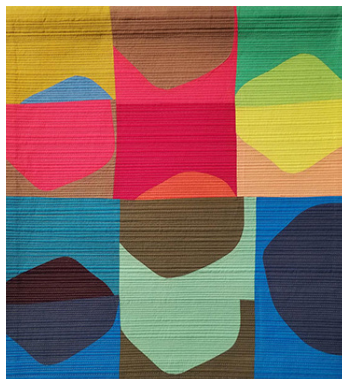


IMAGE — Julie Drake, *Haystacks*, 2017, quilt, *Nature's Kinship Travels*, MoNA Outside In Gallery

TESTIMONIALS FROM OUR COMMUNITY

Cynthia — “I love the museum focus on NW Artists and how MoNA keeps the Northwest School alive. My favorite artist is Richard Gilkey, a young contemporary of the Northwest School.”

Tamara — “We love MoNA and love supporting the preservation of Northwest Art and artists!”

Margaret — “Beautiful space with lovely art. Loved the NW mystics exhibition. What an interesting special exhibit of Joan Kirkman’s fashion illustrations and her paintings.”

Lanny — “I like MoNA, I want to support the Museum that supports artists.”

Visitor — “Well-curated exhibitions especially the NW mystics one. Great staff! Very knowledgeable and engaging. The space is very beautiful and we’re looking forward to other exhibitions.”

Richard — “Great atmosphere. The staff and volunteers are really kind as well!”

Casey — “Stopped in on a whim and wound up loving the museum. The docent spoke to us beautifully about the pieces on display and a little about the museum, then, we strolled through the lower and upper floors. Learned about a few (new to us) artists who were influential to the culture in the area. Please visit and donate!”



MoNA extends our deepest gratitude to all of the volunteers, who have given their time and talents throughout the year. We could not have done the work without you.

THE MONA DOCENT ASSOCIATION is a highly committed group of volunteers and an essential part of MoNA; some have been docents for 35 years. They are responsible for welcoming visitors, providing background information on exhibitions, artists, and artworks, as well as monitoring the Galleries. Their knowledge, enthusiasm and dedication add to visitor experience, and with unique skills and diverse backgrounds, many docents volunteer to make other programs and events possible. Over 2,000 hours were volunteered in 2019.

(IMAGE ABOVE — photo by Tim Mickleburgh, docent walkthrough)

As part of the MoNA's education program docents also attend social and educational activities including excursions to other museums, private collections and artists' studios. To join and for more information email us at info@museumofnwart.org.

Britt Wisniewski, docent since 2002 — “As docents we never know who we may encounter, where they are from, what their interests may be, or what they may need to know to appreciate better and enjoy their MoNA experience; this is our constant challenge. It is what makes our time at the Museum so interesting and fulfilling. To each visitor we represent, however briefly, what the Museum is all about. The rewards grow with every encounter.”

MoNA STORE

In the fall of 2018 the MoNA Store reenvisioned itself, with a new focus on local artists combined with an extensive remerchandising of new products that spoke to all ages. It created a unique shopping experience that helped 2019 become a successful year.

Listening to the needs and requests of our visitors, the store expanded its selection of glass, jewelry, pottery, and painting, and its book collection to increase emphasis on Northwest art and culture. Besides supporting local artists, the store provided a significant revenue stream in 2019 that directly supported MoNA's operations.

This success could not have been possible without our loyal customers. Thank you for your support!

IMAGE — Catherine Kerwick, *Hero*, 2019, clay sculpture
Available at the MoNA Store, (360) 466-4446 ext. 106,
monastore@museumofnwart.org



SELECT 2019 ACQUISITIONS

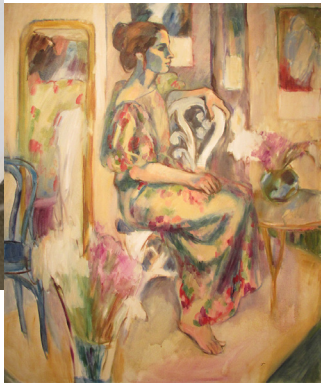


IMAGE —
Joan Kirkman,
Untitled, no date,
oil on canvas
MoNA, gift of the
Kirkman Family



IMAGE —
Eve Deisher, **Self Portrait**, 1987,
pencil, oil pastel and paint on paper,
MoNA, gift of Lanny Bergner

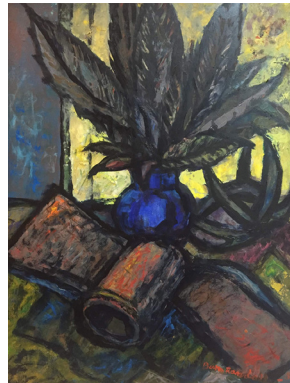


IMAGE —
Byron Randall,
**Mattock Head with
Buzzard Feathers**,
1989, oil on panel
MoNA, gift of Laura
Chrisman

In 2019, MoNA's Permanent Collection acquired 122 pieces of artwork. Thank you for making the preservation of Northwest Art possible. To learn about how to donate artwork to our collection contact us at collection@museumofnwart.org.

FINANCIALS

This critical funding has allowed us to —

- Bring Northwest Art to 16,092 visitors.
- Provide crucial art education & outreach programs.
- Preserve the Permanent Collection of over 2,500 pieces.

Total Income	\$648,648
Grants	\$78,360
Donations	\$248,477
Membership	\$20,430
Events (Net Proceeds)	\$185,844
Store (Gross Profit)	\$96,235
Endowment	\$15,315
Classes, Facility Rental, and Interest	\$3,987

Net Surplus	\$26,519
Earnings Before Non-Cash Expense	\$67,965
Depreciation Expense (Non-Cash)	\$39,334
Other Non-Cash Adjustments	\$2,112

Total Expenses	\$580,683
Wages, Benefits, and Taxes	\$368,172
Exhibition Production	\$28,976
Educational Programs	\$12,076
Utilities	\$25,388
Repairs and Maintenance	\$29,400
Insurance	\$13,793
Other Expenses*	\$102,878

Store Net Income	\$24,540
Gross Profit	\$96,235
Total Direct Expenses (including Store Staff Wages, Benefits & Taxes)	\$71,695

* Includes: Catalog Production; Permanent Collection & Archive; Store Expenses; Supplies; Office Equipment & Software; Postage; Design & Printing; Marketing; Fundraising; Real Estate Taxes; Storage Facility; Licenses & Permits; Dues & Subscriptions; Interest; Bank Fees; Mileage; Accounting Fees; Miscellaneous

SUPPORTERS

Thank you to all of our supporters who advance and believe in our mission to enrich the lives in our communities through ART. Your gifts help secure MoNA's financial future.

Friends of MoNA (\$20,000+)

Anonymous (2) Tom Kirkman & Laurie Kirkman
Marge Bickel Gloria Wampler
Ann & Donald Caldwell

Friends of MoNA (\$10,000 — \$19,999)

Bruce Bradburn & Meg Holgate
Karl Holzmuller
Donna James
Washington State Arts Commission

Friends of MoNA (\$5,000 — \$9,999)

Anonymous (1) Lucille Cole
Anacortes Arts Festival Michael Cunningham
Apache Corporation Joanne Fredrich & Stephen Willson

Friends of MoNA (\$2,500 — \$4,999)

Anonymous (1) Susan Parke & Dederick Ward
Sheena Aebig & Eric Taylor Candice Reid & Charles Stavig
Kerry Dyson Allen Roth Family Foundation
Max Benjamin Skagit Community Foundation
Chris & Allen Elliott Skagit County Lodging Tax
Jim & Fiona Jackson Smith & Vallee Gallery
Gretchen & Curt McCauley Town of La Conner

Trico Companies LLC
Tulalip Tribes Charitable Fund
US Bank
US Bank Foundation
Wyman Youth Trust

Friends of MoNA (\$1,000 — \$2,499)

Chap & Eve Alvord Gerry Henriot
Tom & Gwyn Beckwith Michelle Hurteau & Philip Moore
Lanny Bergner Carrol Hutchinson & Bert Clay
Margot Black & Mark Peters John L. Scott Real Estate
Shona Black Kent L. Johnson &
Ann & Jon Bowman Anastasia T. Vladowski
Thomas & Carla Bucknell Karen Kaufmann
Burlington Freeway Storage Steve & Diana Klein
B.J. Carol Greg Kucera & Larry Yocom
Arden & Stuart Charles Linda & Mac MacGregor
Sarah Dalton & Jeff Griffiths Marianna Metke
C.J. Ebert Mocerri Construction, Inc.
Robert Gregory & Bonnie Ellis Paul Mocerri & Susan Porter
John & Roodi Hancock Judi Mullikin
Mit & Maureen Harlan Nancy Nordhoff & Lynn Hays
Jacalynn Havenstein & Cal Mathews Simon & Carol Ottenberg
Don Hebard Sina Pearson

Herb & Lucy Pruzan
Lorne & Judith Render
Meghan & Stan Rice
Alexa & Tom Robbins
Gregory Robinson
Andrew & Bonnie Schuh
Scott Milo Gallery
Betty Scott & Michael Tuttle
Leslie Snapp
Mel & Leena Sturman
David Sumrall & Maren Gribskov
Cara Lyn Tangent & Richard Barbieri
Britt-Mari & Richard Wisniewski
Perry Woodfin & Judith Sikora
The Shiflett-Woolsey Family Fund
Catherine & Keith Wyman
Klaus & Marcia Zech

Friends of MoNA (\$500 — \$999)

Anonymous (1) Barbera Brooks
Adelstein, Sharpe & Serka LLP Burlington Edison Kiwanis Club
Parks & Ginger Anderson Shari Burns
Paul Beaudet & David Wertheimer Joan Cross & Mike Thuot
Lynn Beebe & Bill Halstenrud Dakota Art Pastels
Erik & Jenny Benson Clara & David Duff
Connie & Jack Bloxom Miklos & Barbara Endrody
Marilyn Braarud Phil & Sally Franzel
Patti Brettell Gallery One Visual Arts Center

Gail Gibson
David & Catherine Hall
Norman & Cindy Haugen
Home Place Memory Care
HKP Architects
Mark & Jeanne Johnson
Fay & Robert Jones
Linda Hodges Gallery
Mary Lindenberg

John & Cynthia Lucke
Brad & Christina Mace
Joan & Keith Magee
Polly & Doug Marsh
Carol Marston & Bob Brunkow
Matzke Fine Art Gallery &
Sculpture Park
Ken Osborn

Carla Anderson & Nancy Ousley
Bob & Annette Parks
James Arrabito & Jessica Pavish
Perry & Carlson Gallery
Justin & TessaRose Petersen
Lynn Prewitt
Caleb Sanders & Tamara Tregoning
Philip & Mary Serka

Joanna Sikes
Bob & Betty Stott
STUDIOEDISON
Mark & Diane Studley
Cheryl Jones Telford
Diane & John Wilkinson

Friends of MoNA (\$250 – \$499)

Anonymous (1)
Thomas Bayley
Jacque Beamer & Julie Blazek
Loraine Boland
Mike & Tanya Brehm
Art Butler & Judy Massong
Stefano Catalani
Laura E. Chandler & Cary M. Stevens
Dawn & David Chaplin
Ann Childs & Steve Thornton
Susan & Gerry Christensen
Jayne Coe
Cathy Conner
Ray Conner & Jason Lewis
Debby & Mark Cruver
Jean Eagleston & Terry Sapp
Kris Ekstrand & Carl Molesworth
Sunnie Empie
Bruce Funkhouser & Michelle Friars
Brian & Alexis Gentry

Adeline Gildow
Jerry Growe & Nomi Kaplan
Gail & Stephen Hopley
Dorothy Howard
Grace Hubbard
Betsy & Richard Humphrey
William & Ruth Ingham
Mel Katz & Dianne Anderson
Shirley Anne Lee
Beau MacGregor
Michele Fremont McCool &
Jerome McCool
Lin McJunkin
Margaret Miller Havas
Bo Miller & Jo Jeffrey
Donald Miller
Glen S. & Alison W. Milliman
Laura Minton Breckenridge
Leslie & Steve Nordtvedt
Marilynn & Bob Olson

Nils Paellman
Marguerite & Josh Paul
Bill & Wendy Rabel
Gerald V. Raphael
Kathleen & Robert Reim
Tammy & Rachel Reim-Ledbetter
Michael & Mary Louise Rust
Robert & Shaké Sarkis
Bruce Wick & Carmen Spofford-Wick
Charles & Linda Talman
William Turner &
Josie Emmons Turner
Patricia Watkinson
Jerry & Jane Weed
D. D. Wigley
Jerry & Kathy Willins
Suze Woolf
Derek & Selina Wyman
Ann, Virginia & Deehan Wyman

Friends of MoNA (up to \$249)

Anonymous (12)
Kris Abshire
Chris & Cynthia Adams
Toni & Marty Adams
Anne Airy
Kathryn Alexandra
Frances V. Allen
Rik Allen & Shelley Muzykowski Allen
Mark & Haydee Allred
Alvin Griffith
Eileen Andersen
James & Kathryn Armagost
Shunji Asari
Donna & David Auer
Craig Barber
Sherry & Terry Barber
Jacqueline Barnett
George & Mary Alice Basye
Mike Bathum
Battelle Always Giving Program
Jane Becker & Geoffrey Brown
David Grant Best
Joline & Frank Bettendorf
Coizie & Dicken Bettinger
Bitters Co., Inc.
Ned & Julia Block
Paul Blum & Alison Zak
Boeing Company
Kristen & John Boyes
Mary Brady
Jane Brandt
Josh & Peggy Brevoort
John Brooks

Tina Brown
Bruce Bucknam & Carole Kihano
Martha Bufkin
Larry Bullis & Jane Alynn
Michael & Odilia Burke
John & Carol Burns
Stewart Toshach & Ellen Bynum
Barbara Carney
Katherine Carson &
Chuck Groesbeck
Gale Caruso-Forest
Jacque & Robert Chase
Cecil & Eleanor Clardy
Pat Clausen
Suzanne & Walter Cochran-Bond
Steve & Lela Coleman
Richard R. Conover & Melodie
Loughmuller
Don & Margaret Coppock
KC Cress & Eric Wallace
Lois Crow
Tim Manns & Brenda Cunningham
Charles & Jonis Davis
Pat De Caro
Patricia De La Chappelle
Paul & Leslie Dempsey
Daniel Denny
David Dickinson
Donna DiFiore
Julie Drake
Erin Duff & Brent Wylie
Tamsyn Dunlap
Vasiliki Dwyer

Patti Dynes
David & Heidi Eisenhour
Lily Eng
Mark & Heidi Epstein
Marie & John Erbstoeser
Larry & Nancy Erickson
Marilyn Evans
Pamela Faber
Rodger & Margo Fagerholm
Kathleen Faulkner
Claudia Fischer
Rebecca Fletcher & Kevin Tighe
Bill & Sandy Fly
Alix Foster & Rick Shorten
Alex & Galina Free
Helen Gamble
Weng & Linda Gavino
Mary Gleason
Peter Goldfarb
Herb & Theresa Goldston
Mark Greaves
Katrina & Dana Greeley
Vicki Gronvall
Jane Gunterman
Vicki Halper
Robert & Tracy Hancock
Wayne & Roxanne Hancock
Virginia Hand
Margaret & M. James Hanson
Pat Hardy
Kathleen & Bill Harmon
John & Marcia Harter
Phyllis Hatfield

SUPPORTERS

Virginia Heiner
Jeffrey R. Highland
Mildred Holtcamp
Eric Hopkins
Stephen & Sheri Hunter
Makiko Ichiura
Oliver Iversen
Wendy Jackson
Hart James
Rita & Michael James
James L. Johnson & Marilyn Kenney
Janice Johnson
Sam Johnson
Julie Jones
Ann & Rick Kaiser
Mark Kelly
Curtis Kemp & Carol Butler
Berit Kenin
Katherine & Dan Khile
Sally Kilpatrick
Helen Kirsten
Jeanne Kleyn & John Black
Vicki & David Kremers
James Kuhn & Claudia Ross-Kuhn
Thomas Kutt
Richard & Lyn Lacher
Rob & Christy Lancaster
Alan Lande
Clifford J. Sells & Linda Larson
Margy Lavelle
Mary Leone
Bruce & Debbie Lisser
Valerie Long
Nancy Loorem & Ron Adams
Thomas & Sharon Lovejoy
Darlene & Francis Lucas
Jim & Terry MacDonald
Paul Magnano
Dan Mahler
Nancy Maron & Larry Soll
K.K. Marske
David Mascarenas
Carol & Bob Masters
Richard Mathes & John Atkinson
Lindy B. Matthews
George & Alice McCain
David McCrae &
 Suzanne Schweitzer
Terence McDonald
Anna McKee
Ann Mendershausen
John Merrill
Barbara Metch
Alice Meyer
Bill & Marti Michaelson
Anne & Jack Middleton
Marilyn Rose Miller & Sabrina Sadler
Marilyn J. Miller
Susan & Fred Miller
Pamela Mills
Mitch Mitchell & Barbara O'Steen
Pat & Marilyn Morgan
Ann Morris
Diane Morton & Wendy Cobb

Kit Muehlman
Mary Ann Musgrove
Donald Myhre
Barbara Nash
Richard & Sherry Nash
David Nechak & Stephanie Snyder
Sharon Nelson
Anjanette Nelson-Wally
Don & Mary Newby
Catherine Jamieson Nielsen
Katherine Norris & Frank Del Gaudio
Ken Obeso & Jana Flanary
Jeffrey O'Boyle
Joanne & Gordon Odegaard
Dale & Kimberly Oldis
Jackie O'Neil
Jim & Judy Orvik
Sally Pagh
Lorna Parent
Gary & Karen Parnell
Cynthia V. & James L. Patereau
Janet Patrick & Kevin Patrick
Jim & Linda Patterson
Don Moody & Teresa Patton
Jan Paul
Jane & Joe Pepia
Margy Pepper
Raymond Perrigoue
Tracy Peterson-Foy & Chris Foy
Claire Phillips
Tom Pickett & Pat Chaves-Pickett
Mary J. Poppe
Tracy & Maralyne Powell
Dyann Provenzano
Melissa Raddatz
Susan Radkins & Dennis Stanchfield
Rebecca Redshaw
Terah Regan & Celeste Rivers
Ann Chadwick Reid & Tom Theisen
Dick Reim & Lavone Newell Reim
Stan Richardson
Greg Roberts & Beth Owens
Bob Rose
John & Patricia Rose
Daniel Rosenfeld & Tricia Allen
Pamela Rushing
David & Mary Rytand
Sharon Sackett
Yoshiko Saheki
Paul & Rebecca Sandall
Edwin & Leigh Sato
John Schmitz
Fred Schram & Brian Kirkpatrick
Noah & Kate Scooler
Dean & Calista Scott
Lynn & Randolph Sealey
Alma Seniuk
Marcy Shapley & David Allan
Ernest Sherman & Tisha Taylor
Brian Silkworth & Bill Colter
Gloria Sinclair
Joyce Siniscal
Skagit Land Trust
Jim & Rhea Ruder Sleeman

Brad Smith & Dale Fournier
Chris & Christine Smith
Sam & Pat Smith
Sharman Smith
Jeanie Smoleroff
Katherine Sodergren
Sheila Sondik & Paul Sarvasy
Steven Soos
Judy Sorrel
Donna Stahl
Arlene Stavig
Crane Stavig
Rob Camandona & Jessica Steele
Carol Stewart
Elizabeth Stewart & Dennis Conte
Scott H. Stewart
James & Patricia Stockdale
Jackie Stone
Dick & Daphne Storwick
Buck Striegel
Monica Strom
Bob Swain
Donna Swartz
Barbara Sweeney
Darcy Swetnam
Megan Sylvester
Ann Tanner
Linda Tennant
Stefanie Terasaki & Michael May
Marilyn Thostenson
Tricia Tiano & Kent Mettler
Jan & Bob Tivel
Todd's Monuments
Doreen Trudel
Sherrill Tyler
Bruce Underwood
Allan Olson & Charlotte Underwood
Mary Vallentyne
Carol & Larry Van Sickle
Lori Vonderhorst
Jane & Heather Wagner
Steve & Kathryn Wang
Thomas Skinner &
 Christine Wardenburg-Skinner
Cherie Ware-Braleay & Ron Braleay
Carol Warren
Donna & John Watson
Barbara Weeks
Douglas & Elaine Weisfield
Dick Weiss
Ron & Jan Wesen
Whatcom Community College
Nancy & Larry White
Don Wick
Barbara Williams
Jude Williams
Barbara Worley
Jennifer & William Woyski
Susan Wren
Kelly Wynn
Marvin Yamaguchi & Dianne Graham
Karen Zagona & Heles Contreras
Margaret Ziegler
Maureen Zopf & Amalie Hovey

LEGACY SOCIETY

MoNA thanks, recognizes, and honors the following benefactors who have invested in MoNA's future through deferred giving.

Eileen Andersen & Richard Studebaker
Lanny Bergner
Marge Bickel
Robert Bragg
Sherry Chavers
Sarah & Bob Christensen
Jon & Joan Christoffersen
Charles & Jonis Davis
Chris & Allen Elliott
Miklos & Barb Endrody
Michelle Hurteau
Janet & Janet Huston
Gerald Jordheim
Marda & Greg Kaiser
John & Cynthia Lucke
Susan Parke & Dederick Ward
Jane & Joe Pepia
Mimi Pierce
Katherine Sodergren
Bruce Wick & Carmen Spofford
Gloria Wampler
Lee Williamson
Margaret Ziegler

When you remember MoNA with a bequest in a will or estate plan, your legacy has a lasting impact on our mission that extends beyond a lifetime.

One of the easiest ways to make a planned gift to MoNA is through a simple bequest. You may designate MoNA as a beneficiary in your will, living trust, retirement plan, or life insurance policy—what best works for you. To learn more about planned giving contact us at (360) 466-4446 X 103 or at development@museumofnwart.org.

While every effort is made to ensure that our supporter information is accurate, we apologize for any errors and ask that you please contact us with any corrections: (360) 466-4446 X 103, development@museumofnwart.org.

Alfred Currier, *Evening Reflection*, 2000
Oil on canvas, MoNA's Permanent Collection
Gift of Paul and Lita Luvera



Museum of Northwest Art

P.O. Box 969, 121 South 1st Street, La Conner, WA 98257
(360) 466-4446 | monamuseum.org