

MONA

Museum of Northwest Art



A Precarious Edge **Steve Klein & Meg Holgate**

Interactive Gallery Guide
February 26 - May 15, 2022

In *A Precarious Edge*, two artists incorporating different media explore a contemplative dialog on the beauty, benefits, and boundaries of our essential habitats. Inside this immersive exhibition a delicate reality surfaces asking the viewer to reflect on a presumptive outlook with a new awareness: how can I preserve and be part of the restoration of our ecosystems?

Beauty, Benefits, and Boundaries

Can we solve problems that have no boundaries?



“Since our ignorance has brought about certain environmental destruction, knowledge will be an important factor for restoring the negative effects we have had on climate change.”

-Meg Holgate

“As witness to a world evolving and dissolving, we are leaving marked changes on the planet like no other time in history.

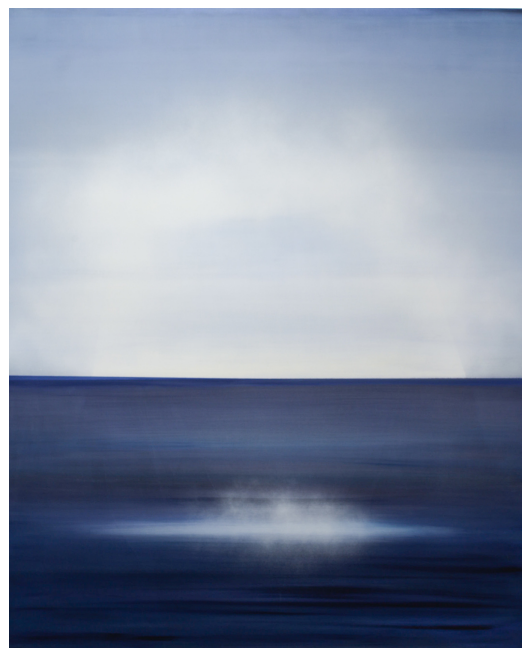
The environmental challenges we are experiencing are a result of our disconnection from the importance of treating and sustaining life on earth with honor and respect.”

-Meg Holgate

When you look at the iceberg painting...



**When you look at “Disappearing”
what do you see slipping away?**



**What do you
SEE?**

Nature
Water
Sky
Earth

**What do you
FEEL?**

Expansion
Beauty
Awe
Connection

MUSIC



The music heard in the galleries is a symphonic piece titled, Terra Nostra, composed by Christophe Chagnard.

What does Terra Nostra mean?

It is Latin for "Our Earth."

This title was chosen to express the nature of our paradox: It is indeed our earth in the sense of our home, our address in the cosmos, but in effect we don't own it, nature does, or did, until we began to challenge it and its perfect balance. If it is truly OUR earth in the most global sense, then we, as a species, must be far better stewards of it.



Earth Creative uses the arts to raise awareness about climate change and environmental justice in ways science alone cannot.

www.EarthCreative.org/creations

"The arts have an immeasurable power to ignite passion for addressing the enormity and urgency of climate change. It is all too often perceived as someone else's problem or one so overwhelmingly massive that action is futile. Art is the most potent and far-reaching expression of our humanity and as such, has the capacity to raise awareness and inspire action where science alone comes up short. Earth Creative is a gathering platform for artists from all over the world to share their passion for sustainability and climate justice through their creations."

- Christophe Chagnard, Founder of Earth Creative

Scan the QR code (or click if viewing online)
to visit the Earth Creative website & watch
TERRA NOSTRA, a 30-minute Symphonic
Film About Our Earth.



ICE



“The principal function of art is to find the truth and create meaning from it.” -Meg Holgate

Steve Klein has used color, texture, and shape to describe:

The contrast suggests:

He is depicting something that has no boundaries.

***How do the dates on the pedestals help you understand change?
What is his message in this?***



There are two places on Earth that are especially sensitive to the effects of climate change. The first is the Arctic, the second is the Antarctic.

Scan the QR code (or click if viewing online) to read more about rising ocean temperatures.



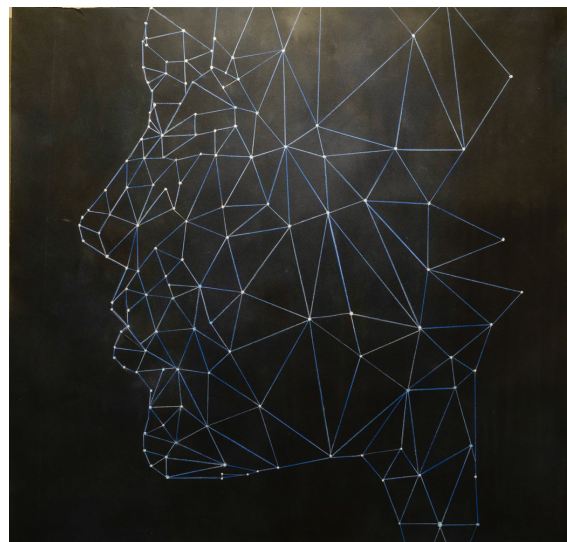
COSMOS

"Recognizable shapes and colors associated with our natural world like melting icebergs, crosscuts of trees, and landscapes speak to the beauty at the beginning of the day when all things are possible and the end of the day, when that moment is gone." -Meg Holgate

Find art in the gallery that represents morning and evening.



We pull simple feats of mind over matter constantly. Every thought requires constant change in the brain. Without a verbal description, measurements, or data how do you connect with the meaning behind the art?

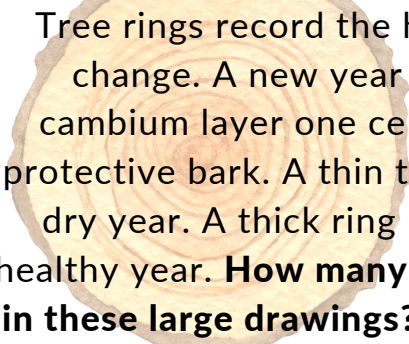


"Everyone wants to make sense out of an artist's works, but in fact it is not supposed to make sense, it's supposed to have meaning."

-Lawrence Weiner

FOREST

Think of a time when your breath has been taken away by an experience in nature and your vision has been altered.



Tree rings record the history of climate change. A new year is added in the cambium layer one cell thick under the protective bark. A thin tree ring indicates a dry year. A thick ring means a wet and healthy year. **How many years are recorded in these large drawings? Are trees this age still growing? Where?**

Scan the QR code (or click if viewing online) to learn more at NOAA's website.



Build your vocabulary & learn to appreciate the importance of forests.

A forest **sequesters** carbon by photosynthesis.

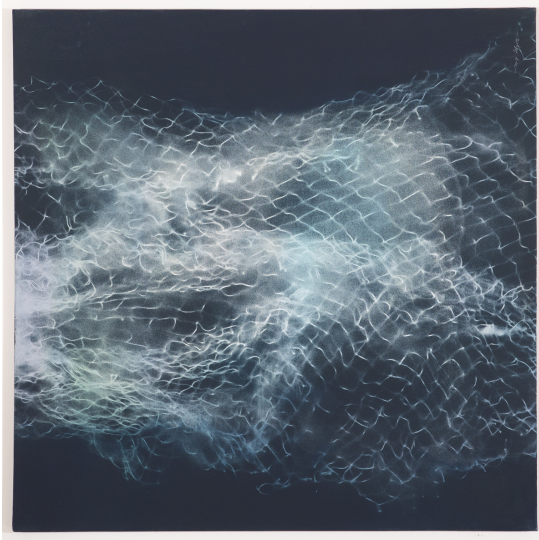
Photosynthesis is the process in which air, light, and water are combined out of “nothingness” into the stuff that becomes forests and all the amazing plants on earth. Photosynthesis is the link between the inorganic realm and the living world, making the inanimate live as plants give us food for energy and air to breathe.

Respiration is a process in living organisms that produces energy by breathing in oxygen to oxidize food and then breathing out carbon dioxide. In other words, there are two phases to breathing - **inhaling oxygen** and **exhaling carbon dioxide**.

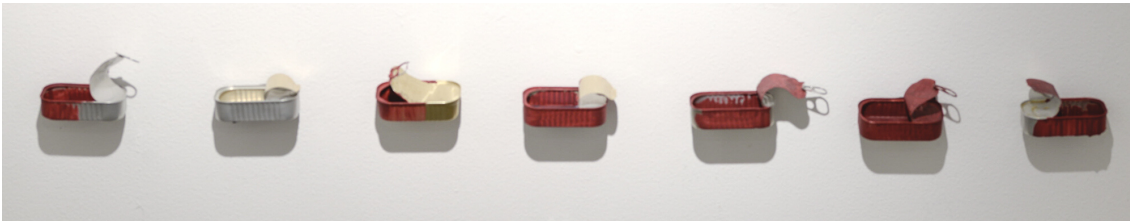
The CO₂ released from respiring cells can be used in photosynthesis again, which creates balance and harmony in the cycle. When plants use solar energy to break apart that same carbon dioxide in the air through photosynthesis, they reverse the cycle by **taking in carbon** for plant material and then **replenishes oxygen** for animals to breathe

Photosynthesis and respiration **balance** the carbon cycle. Consider how emissions from the combustion of fossil fuels **imbalance** the cycle.

OCEAN



How each of us think and perceive our role and responsibility in the world is the first step backing away from A Precarious Edge... The conversations in front of the nets include possibility and opportunity. We are interconnected parts of the web of life - the source of water, food, fiber, medicines, inspiration, beauty, and art.



The good news is that we can do something about our changing climate.

Since the early 1990s, numbers of disappearing ocean species have risen significantly. Millions of tons of “by-catch” or unwanted fish have been killed and tossed back into the sea because of unsustainable fishing practices. Be conscious of the seafood you are eating. Consider choosing sustainably caught varieties.

Many solutions depend on the production and consumption of food. Choose to **reduce** excessive food packaging. **Reuse** or **recycle** whenever possible. Consider not wasting food. Take to heart this advice: ***Take all you want, but eat all you take.***

危機

Danger

Opportunity

“I want to convey my strong feeling that what we are facing is not just a cause for alarm, it is also a cause for hope. As many know, the Chinese expression for “crisis” consists of two characters side by side. The first is the symbol for danger, the second is the symbol of opportunity. We have everything we need to begin solving this crisis, with the possible exception of the will to act. But in America, our will to take action is itself a renewable resource.”

-Al Gore

REFLECTION

How can I preserve and be part of the restoration of our ecosystems?

Around the world, people are looking for innovative ways to reduce human impact on climate. The idea of sustainability is about adjusting our lives so that we become less reliant on practices that will spoil the world for future generations.



Describe a problem you would like to solve.

Why do you think this problem exists?

How does the problem affect you? How does the problem affect other people?

List possible solutions to the problem.

Choose one of the solutions you listed.

Explain what you need to do to get people to use your solution.



We want to hear from you!

There are many ways we can engage in caring for our planet and sharing ideas can effect change.

In what ways are you taking steps to act against climate change?

Share your ideas and photos with us by sending an email to

education@museumofnwart.org

and you could be featured on

MoNA's social media!

Photography credit: Tim Mickleburgh