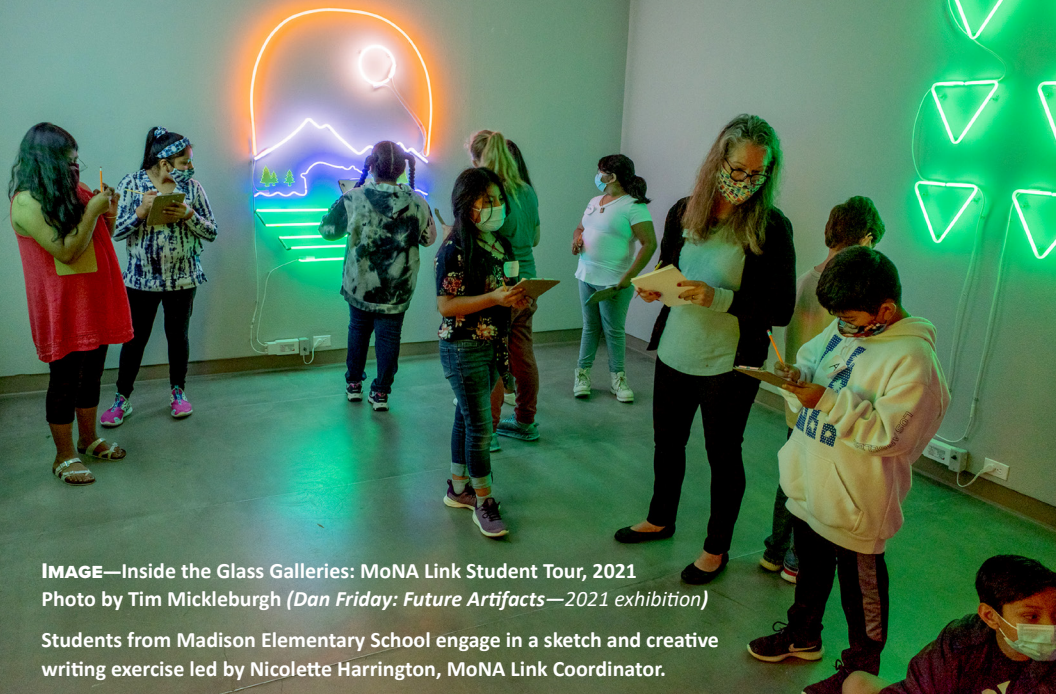




**MoNA**  
Museum of Northwest Art

**2021 ANNUAL REPORT**



**IMAGE**—Inside the Glass Galleries: MoNA Link Student Tour, 2021  
Photo by Tim Mickleburgh (*Dan Friday: Future Artifacts*—2021 exhibition)

Students from Madison Elementary School engage in a sketch and creative writing exercise led by Nicolette Harrington, MoNA Link Coordinator.

## **MISSION STATEMENT**

The Museum of Northwest Art collects, preserves, interprets, and exhibits art created in the Pacific Northwest, supports artists, and strives to integrate art into the lives of all people.

## **COLLECTIONS & EXHIBITIONS**

MoNA collects and exhibits contemporary art from across the Northwest, including Alaska, British Columbia, California, Idaho, Montana, Oregon, and Washington.

## **EDUCATION**

MoNA's Education Department provides an inclusive environment and stimulating programming that supports the development and expression of all people.

- 3 From the Board President**
- 4 From Joanna Sikes**
- 5 From Stefano Catalani**
- 6 Board & Staff**
- 7 Financials**
- 8 Exhibitions**
- 9 Education**
- 12 Northwest Art Collection**
- 14 MoNA Store**
- 14 Volunteers**
- 15 Supporters**
- 23 Legacy Society**

# From CJ Ebert, *President of the Board of Trustees*

## Dear MoNA Community,

As we begin the 41st year of the Museum of Northwest Art, positive changes have been made to our beloved organization.

First, I would like to extend a heartfelt thanks and appreciation to Joanna Sikes, who has served as our Executive Director for the past four years. During her tenure, Joanna has strived and succeeded in reconnecting the Museum with artists, members, key donors, and most importantly, the community we serve. In addition, Joanna has developed a highly dedicated, high-quality staff, orchestrated two successful “virtual” Art Auctions and helped create a strong financial balance sheet that will allow MoNA to continue to grow into the future. Ms. Sikes has now moved from Executive Director to Director of Development, focusing on fundraising, donor relations, and grant development, all critical to building long-term financial growth and stability. Thank you, Joanna! It is to your credit MoNA is in such great shape as we enter our 41st year!

Our new Executive Director, Stefano Catalani, comes to the Museum with seasoned operational experience gained from his tenure at Bellevue Arts Museum and Gage Academy of Art. We are fortunate to have Stefano join us. We look forward to his leadership and, most notably, his enthusiasm to build MoNA as a highly recognized regional museum of Northwest Art.

Our MoNA store is profitable, and it is a fun place to visit and shop. The Store, the entire Museum staff, the docents, and the scores of MoNA volunteers are as dedicated and motivated as always in providing the best experience of the treasure of Northwest Art for the whole community. Financially, MoNA is now in the most vital position it has been in many years. Thanks to our donors and members’ outstanding support, combined with excellent stewardship of the mission and guidance from both board and staff—again, a credit to Joanna!

Given the institution’s finances, it is now our intention to address and execute the long-awaited repairs to the roof, the heating and ventilation system, and the restoration of the south wall, with work to begin immediately following the 2022 Art Auction. These much-needed repairs are possible thanks to the generosity of past and current donors like you. MoNA is on the right path to financial and organizational sustainability with your continued support.

This year, the 30th Annual Art Auction will blend on-site viewing with virtual online bidding, a process that has worked well in the past two years. In addition, we hope to have a live event during the Art Auction whereby we can gather together, share our passion for art, the Museum’s mission and strengthen the foundations for the future. Without a doubt, we can all agree it is time for a party!

To conclude, I want to personally thank you, the MoNA community, for your ongoing support. The Museum would not be here without your generous help, constant encouragement, and candid feedback. The entire board, staff, docents, and all our volunteers thank you for your unremitting support.

# From Joanna Sikes

*Executive Director (2018—2021)*

One of the pleasures of being the Executive Director is to share the stories that unfolded over the year in the Annual Report. Starting with my first report in 2018, the Museum has continued to build a solid financial foundation with a constant focus on how to prepare for the future. Education programs and exhibitions continued to stay relevant to the diverse communities we serve, free of charge and accessible to all.

The 2021 exhibitions presented artwork by two Northwest Artists at different stages in their careers, each with unique, strong creative styles and different cultural roots.

Max Benjamin is an abstract painter who, for over 61 years, continues to paint every day in his rural studio on Guemes Island. His brushstrokes have more in common with the abstract style of New York than the Mystic artists of the Northwest. **Future Artifacts**, Dan Friday's first museum exhibition, introduced his unique way of working with blown and sculpted hot glass, infused with his heritage as a member of the Lummi Nation. The hand-tied fishing nets, woven baskets and textiles, and the story of the longhouse inform the artwork.

The Education Team's mission, to reach out into the community, received grant support from a wide group of sources such as Arts WA, private and public Foundations. As a result, **MoNA Link** continued to build a legacy of art teachers in public schools, adhering to the highest standards for teaching the arts. **Early Enrichment** classes filled the galleries with laughter as young children sat on the floor, ready to begin with great excitement. **The Art Box Lending Library** for classroom teachers offers art boxes filled with art materials at no cost.

Membership increased due to new members, and equally as important, returning members. The membership program is now a vital revenue stream. **GiveBIG** and **Giving Tuesday** fundraising programs continued to increase and were very successful. The Annual Art Auction was the most successful since 2018 due to the overwhelming support of the artists and the community of bidders.

The **Curatorial Maintenance Project** of the Museum Northwest Art Collection was launched in 2021 to review the care and current condition of the works in the collection. The images with detailed information will soon be available to scholars, visitors, staff, and researchers online.

I want to send a warm thank you to the amazing supporters who made the programs and exhibitions possible and to the dedicated Museum Staff, Board of Trustees, Docents, and Volunteers. The Museum of Northwest Art is a creative place that is admission free 365 days a year, and which will continue to be for many years to come, due to *your* involvement and care.

**Looking forward to 2022.**

# From Stefano Catalani

*Executive Director (2022—Present)*

## **Dear MoNA Community,**

I am honored and tremendously excited to serve as the new Executive Director. I am grateful to the Board of Trustees for the confidence they have placed in me to lead such a storied institution. But, above all, I am excited to build on MoNA's strong work to serve and represent all communities by means of collecting, preserving, interpreting, and exhibiting the art created in the Pacific Northwest.

I look forward to working with the Museum Board, the Director of Development, Joanna Sikes, who has done a fantastic job stewarding the Museum through difficult times as former Executive Director, and the amazing Staff who bring extreme dedication and talent to the arts. As well as to engage all of you, the community at large through my commitment to art, culture, inclusivity, and the deep-seated belief that art can touch, transform and reshape our perception of life.



**IMAGE**—Max Benjamin, CCXXXVII, no date, oil on canvas  
*Max Benjamin...A Road Well Traveled*—2021 exhibition

**STAFF**

Stefano Catalani  
*Executive Director*

Joanna Sikes  
*Director of Development*

TessaRose Petersen  
*Finance Director*

Maggie Paul  
*Collections Manager*

Tate Ohl  
*Collections Assistant*

Ellie Cross  
*Community Outreach Coordinator*

Nicolette Harrington  
*MoNA Link Coordinator*

Kim Simon  
*Learning & Engagement Coordinator*

Brenda Brito  
*Development Associate*

Kay Reinhardt  
*Development Associate*

Martha Bufkin  
*Store Manager*

Deidre Ashmore  
*Sales Associate*

Marci Plank  
*Sales Associate*

**BOARD OF TRUSTEES**

C.J. Ebert  
*President*

Thomas Bucknell  
*Vice President*

Michelle Hurteau  
*Vice President*

Catherine Wyman  
*Treasurer*

Jacque Beamer  
*Secretary*

Tom Beckwith

David Buck

Meghan Dunlap-Rice

Kathleen Faulkner

Candice Reid



**IMAGE**—Dan Friday, *Lummi Lightning Bear*, 2020, hand sculpted hot glass  
*Dan Friday: Future Artifacts*—2021 exhibition

# MONA AT A GLANCE

Total number of museum visitors: **23,095**

Members: **450**

Total permanent collection acquisitions: **17**

Number of artists exhibited: **51**

Adult outreach participants: **475**

Number of students served via classroom visits: **1,050**

Number of youth outreach participants: **1,634**

**IMAGE**— Dan Friday, *The Sun Sets on the Salish Sea*, 2020, Audio Visual with mixed media, *Dan Friday: Future Artifacts*—2021 exhibition



## FINANCIALS

Total Income	\$989,847
Contributions	\$242,696
Grants	\$195,609
Events, Net Proceeds	\$212,898
Membership	\$42,490
Store, Gross Profit	\$134,452
Endowment Earnings, Classes & Interest	\$13,462
Forgiven Debt <sup>1</sup>	\$148,240

Total Expenses	\$620,943
Wages, Benefits, & Taxes	\$414,020
Exhibition & Permanent Collection	\$63,370
Educational Programs	\$11,514
Utilities	\$24,921
Repairs & Maintenance	\$23,774
Insurance	\$14,380
Other Expenses <sup>2</sup>	\$68,964

Net Surplus	\$326,880
Earnings Before Non-Cash Expense	\$368,904
Depreciation Expense (Non-Cash)	\$39,164
Other Non-Cash Adjustments	\$2,860

Store Net Income	\$50,435
Gross Profit	\$134,452
Total Direct Expenses (including Store Staff Wages, Benefits & Taxes)	\$84,017

*\*1 Income from Forgiven Debt related to loans from the SBA's Paycheck Protection Program*

*\*2 Includes: Store Expenses; Supplies; Office Equipment & Software; Postage; Design & Printing; Marketing; Fundraising; Real Estate Taxes; Storage Facility; Licenses & Permits; Dues & Subscriptions; Interest; Bank Fees; Mileage; Accounting Fees; Miscellaneous*

## WINTER MAX BENJAMIN...A ROAD WELL TRAVELED

January 23, 2021—May 9, 2021

Max Benjamin was born in San Diego in 1928. After serving in the Navy, he used his GI benefits to study art at the University of Washington. In 1959, he traded the security of a job at Boeing for a log cabin down a long winding road on Guemes Island—to paint.

Max has always traveled his own road; for 61 years, he stayed true to his style. His early paintings had more in common with NY's Abstract Expressionism or European art movements than the Northwest mystical style. He continues to paint every day in that now expanded log cabin.

**GUEST CURATOR**—Susan Parke

**ARTIST**—Max Benjamin



**IMAGE**—Max Benjamin, *Guemes Island*, 1991, pastel on paper, Collection of Michele and Al Lesmeister

## SUMMER / AUTUMN DAN FRIDAY: FUTURE ARTIFACTS

July 3, 2021—January 3, 2022

Dan Friday, a glass artist and a member of the Lummi Nation, has worked for Dale Chihuly, Paul Marioni, Preston Singletary, and other glass artists for the last twenty years. He taught at the Pilchuck School of Glass and has had residencies at the Museum of Glass in Tacoma, WA, and the Dream Community in Tai Pei, Taiwan. Recipient of the Discovery Fellowship through the Southwestern Association for Indian Arts, his work can be seen in galleries across the United States.

His unique way of working with glass infuses his heritage using simple themes, forms, and subtle silhouettes. His narrative work is a personal expression or a means of processing a life event, often with an underlying statement.

Friday presented his work along with woven and textile pieces of contemporary Coast Salish Weavers, hand-tied fishing nets, and the story of the longhouse, to explain, respect, and display the splendid artistic, cultural, and history richness of the Coast Salish peoples.

**CURATORS**—Carla Bucknell (weavings), Dan Friday (glass)

**ARTISTS**—Dan Friday, Caitlin Aleck, Allison Burns, Anjeanette Dawson, Angela George, Denita Holmes, Fran James, Raven Jefferson-Morse, Danielle Morsette, Troy Olsen, and Dr. Susan Pavel, and Jim Washington



**IMAGE**—Dan Friday, *Raven Totem*, 2021, sculpted glass





**169**  
Number of youth & family participants



**1,634**  
Number of youth outreach participants



**63**  
Number of adult program participants



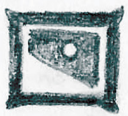
**1,475**  
Number of outreach art kits



**475**  
Adult Outreach participants



**1,050**  
Number of students served via classroom visits



**393**  
Number of students that visited the museum



**9**  
Number of new MoNA Moments podcast episodes



**34**  
Number of art boxes checked out

## THANK YOU

Thank you for being supportive of the Museum's art education programs. In 2021, as learning experiences continued to be altered by the pandemic, we saw that connecting in person mattered even more after months of remote learning. We work collaboratively with fourteen classroom teachers, providing them with training to build their capacity to develop and implement an effective art curriculum. We continue to build community through museum programs and provide teachers with resources to provide art experiences for their students.



**IMAGE**—2021 MoNA Link Teacher cohort. Photo from the 2021 Summer Institute

## MoNA LINK

The **MoNA Link Program** provides teachers with opportunities to make, experience, and better understand art, to help their students achieve visual art state learning standards. Using the method *Visual Thinking Strategies (VTS)*, educators are trained to talk, teach, and integrate art in their classrooms to enhance the learning of other core subjects.

In 2021, fourteen teachers enrolled in the MoNA Link two-year professional development opportunity that encourages teachers to use MoNA as a community resource and provide instructional support. This year, teachers participated in training days focused on visual art learning standards, techniques in using various media, types of drawing, and learning new ways of talking with students about their art. They were introduced to authentic resources for teaching local indigenous cultures and practiced using VTS in their classrooms.



**IMAGE**—In the *MoNA Art Studio*: class activity, 2021

**(MoNA Link continued)** To prepare for museum field trips, MoNA Education staff introduced MoNA Link students to the Museum through pre-tour class visits. During a museum tour, students participated in a VTS discussion and engaged in a hands-on activity in the **MoNA Art Studio**. “Mobile Museum Visits” were provided when student groups could not visit the Museum due to COVID-19 restrictions. Teachers and Museum staff continue to work collaboratively to create numerous resources that connect art to core curriculum.

*“The workshop was valuable because I see now how important **Visual Thinking Strategies (VTS)** is and how it will build observation skills, communication skills, and critical thinking too!”*  
—MoNA Link Teacher

*“The museum installations are so inspiring yet approachable and allow my students to want to express themselves.”*—MoNA Link Teacher

## FAMILY & YOUTH PROGRAMS

Our Family Programs are designed to bring new visitors to the Museum while providing opportunities for enrichment and arts engagement to repeat visitors. In 2021, we hosted **Early Enrichment** in person again, welcoming families back into the galleries! The program served 129 people, reading stories in the galleries and making art in the **MoNA Art Studio** like finger-painting and paper collage. In partnership with Skagit Watershed Council as part of their Illuminight Celebration, we also hosted a Luminary Globe Workshop.

## ADULT PROGRAMS

Adult Programs include art classes and workshops that promote lifelong learning and talks, lectures, and panels to inspire and provoke. For example, MoNA hosted online talks “A Poetic Apothecary” by Judith Adams and “American Democracy’s Indigenous Roots and Future” by Fern Naomi Renville as part of the Humanities Washington Speakers Bureau Program. Zoom art classes included a card-making workshop and a color theory painting class. We also hosted a free in-person collage workshop, inspired by the theme of the Standing, Still exhibition in the Outside In Gallery.

**THE OUTSIDE IN GALLERY**, MoNA's Education Gallery, is a dedicated space bringing local voices from the community into the Museum, providing a platform for those voices to be heard. It is made possible through generous grants from the **Skagit Community Foundation** and **US Bank**.

### **WINTER STARS IN THE SKY/ESTRELLAS EN EL CIELO**

**(January 23—May 9)** The art in this exhibition was created by young artists from Camp Korey, a member of Paul Newman's SeriousFun Children's Network. Since 2005, it has served over 31,000 campers bringing year-round camp programming to children with life-altering medical conditions, always free of charge.

**CURATOR**—Camp Korey

**ARTISTS**—2020 Virtual Summer Campers: Amanda D., Nichol E., Alex H., Kathy H., Kim S., 2020 Virtual Summer Campers, Campers from 2009-2019: Isaia C., Kaiden H., Nate J., Finn M., Emma M., Erin M., Makenna M., Grace R., Izzy R., Nola R., Rachel S., Scarlet S., Unknown, Tanner V., Skeletal Dysplasia Campers 2013: Mayyadah Z., and all campers

### **SUMMER / AUTUMN STANDING, STILL/EN PIE, AÚN**

**(July 3—October 10)** *Standing, Still* strived to capture both the societal standstill caused by the pandemic and the resiliency of communities, who emerged standing after their experiences. Eleven artists explored the topic of COVID-19 through first-person stories and creative expression, creating a united narrative. The show linked storytelling and empathy to promote mutual understanding and compassion for others.

**CURATORS**—Co-curated by Hanna Corneliussen and Danielle New, emerging museum professionals and graduate students from the University of Washington Museology Program

**ARTISTS**—Monyee Chau, Blair Goldstein, Barry Johnson, Jody Joldersma, Lorena Krause, Dawn Laurant, Ries Niemi, Lisa Sheets, Burke Smithers, Lynn Whitford, Miggie Wong

### **AUTUMN /WINTER ILLUMINATING SKAGIT/**

#### **ILUMINANDO A SKAGIT**

**(October 23—February 13, 2022)** This exhibit took visitors on a luminous journey throughout the Skagit watershed, which starts at the mountain peaks of the North Cascades and heads downriver, leading into the Salish Sea. The show displayed luminous examples of our watershed's wildlife and habitat and provided visitors with educational resources to protect them.

**CURATORS**—Holli Watne, Community Engagement Coordinator and Arts and Science Educator for Skagit Watershed Council, and Richelle Potter, Art and Science Educator and Luminary Arts Teacher for Friends of Illuminated Wildlife

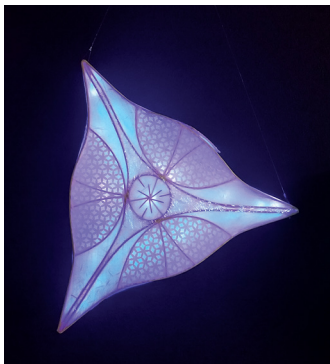
**ARTISTS**—Kathleen Bisagna, Richard Brocksmith, and Nichole C. Rose



**IMAGE**—Camper Artwork, *Stars in the Sky*



**IMAGE**—Jody Joldersma, *Solitude in a Room of One's Own*, 2016, acrylic, paper, photograph, pencil, on wood. 24" x 18," **Standing Still**

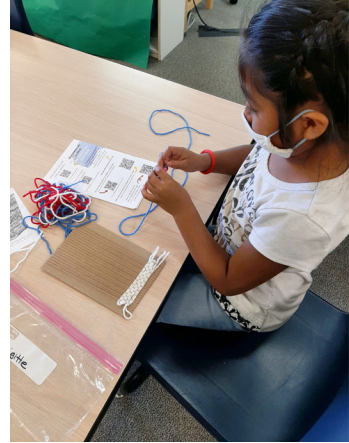


**IMAGE**—Nicole C. Rose, *Triceratium Diatom*, paper and reed, 2021, **Illuminating Skagit**

## MoNA OUTREACH

MoNA's Outreach programs are focused on building community relationships, delivering a wide variety of programming, encouraging shared cultural experiences, and increasing access to resources for youth and families in Skagit County. This year we partnered with Camp Korey, CCS Farmworkers Center, the Children's Museum of Skagit County, Foundation for Academic Endeavors' summer programs, and the Skagit Watershed Council. Through your support, we distributed **1,475 free art kits** to students and families, grew the **Art Box Lending Library** with four new boxes, and launched the **Art Lesson Archives**—an expanding collection of comprehensive lesson plans inspired by Northwest artists accessible online for free.

For more information about our education programs contact us at: [education@museumofnwart.org](mailto:education@museumofnwart.org)



**IMAGE**—Student engaging with the 2021 Weaving Art Kit

## NORTHWEST ART COLLECTION

### CURATORIAL MAINTENANCE PROJECT

The project started September 21, 2021, as an effort to identify, condition report, number/tag, and photograph all artwork in the on-site Museum collection storage area. In addition, this project will enable the MoNA Staff to better activate and use the Museum's Northwest Art Collection for exhibitions and aid in its direct care.

In the future, the photographs taken during this project will be available to scholars, visitors, staff, and researchers, on the Museum's website.

*"It has been a privilege to work on the **Curatorial Maintenance Project**. The collection itself is way more sophisticated and immense in quality than I ever imagined for a small museum. Working in the art world for most of my life, my appreciation of the quality of this large collection has confirmed my belief that MoNA can compete with any large city museum in collection significance. The dedication of the MoNA staff to completing this project is commendable. I look forward to continuing to help in any way I can."*—Nancy, Volunteer



**IMAGE**—Volunteer, Gary Giovane and Collections Assistant, Tate Ohl working on the Curatorial Maintenance Project, 2021

## SELECT 2021 ACQUISITIONS



**IMAGE**—Alden Mason, *Tina Pigeon*, 1990, acrylic on canvas, gift of Paul and Lita Luvera



**IMAGE**—Dale Chihuly, *Artist*, 1990, glass, gift of Lin Folsom



**IMAGE**—E.P. Ziegler, *Outpost Tree at Nellie Juan, Alaska*, no date, oil on board, in memory of Robert Daniel Heffernan, Jr.

To learn about how to donate artwork to MoNA's Northwest Art Collection contact us at: [collection@museumofnwart.org](mailto:collection@museumofnwart.org)

# MoNA STORE

Thank you to all our gracious guests and artists for a spectacular 2021 from the MoNA Store! While having our best year ever, we increased sales by nearly one-third over the previous year and brought in unique works and new artists to enrich our homes and lives. We look forward to 2022 with high expectations to build on last year's accomplishments and continue to develop meaningful partnerships with Pacific Northwest visual and craft artists. The Store is brimming with jewelry, glass art, pottery, cards, books, home decor, and more!

To augment our success, we look forward to collaborating with our new Executive Director, Stefano Catalani, to bring his vision and talents to the Museum and Store. Thank you to all who visited our Store.

We eagerly anticipate seeing you in the new year!



IMAGE—Roger Small, *Osaka Sun*, framed oil on canvas

Contact us at:

[monastore@museumofnwart.org](mailto:monastore@museumofnwart.org)  
(360) 466-4446 X 106

## VOLUNTEERS

MoNA extends its deepest gratitude to all volunteers who gave their time and talents throughout 2021! Thank you for helping the Museum re-open its galleries, supporting the staff in creating online and remote programs, and going above and beyond amidst difficult times. We could not have done the work we do without you!

**Interested in volunteering?** Learn more at: [monamuseum.org/volunteer-opportunities](https://monamuseum.org/volunteer-opportunities)



IMAGE—Volunteer Tour Leader, Kari Stickle, leading a Museum Tour, 2021



IMAGE—Exhibition Installation Volunteer, Lucy Mae VanZanden

## THE MONA DOCENT ASSOCIATION

MoNA's docents are a highly dedicated group of volunteers; they are art lovers committed to the success of the Museum's educational programs and exhibitions. Their many talents make an enormous impact on the Museum. In addition, as museum ambassadors and tour guides, docents foster appreciation and understanding of the Museum's exhibitions, artists, and artworks, ensuring a rewarding experience for all guests. Thank you to the Docent Team for your hard work in 2021!



IMAGE—2021 Docent Walkthrough with exhibition artist, Dan Friday

## SUPPORTERS

Thank you, supporters and members, who advance and believe in our mission to enrich the lives of our communities through ART. Your gifts help secure MoNA's financial future!

### Friends of MoNA (\$20,000+)

Arts Fund  
Leonard and Norma Klorfine  
Judi Mullikin  
Jacqueline Dinsmore Stegner

### Friends of MoNA (\$10,000 — \$19,999)

Maria A Palensky  
Ellsworth and Eve Alvord  
Ann and Donald Caldwell  
Karl Holzmüller

IMAGE—Max Benjamin's Painting Easel  
*Max Benjamin...A Road Well Traveled*  
—2021 exhibition



### Friends of MoNA (\$5,000 — \$9,999)

Marjorie Bickel  
Dunlap Towing  
Mac and Linda MacGregor  
Skagit Community Foundation

### Friends of MoNA (\$2,500 — \$4,499)

Sheena Aebig and Eric Taylor  
Michael Cunningham  
C.J. Ebert  
Chris and Allen Elliott  
Mark and Heidi Epstein  
Bruce Bradburn and Meg Holgate  
Candice Reid and Charles Stavig  
Roth Family Foundation  
David Skinner and Catherine Eaton Skinner  
Smith & Vallee Gallery  
U.S. Bank  
Wyman Youth Trust

### Friends of MoNA (\$1,000 — \$2,499)

Anonymous  
Kerry Dyson Allen  
Deidre and Andrew Ashmore  
Banner Bank  
Jacque Beamer  
Max Benjamin  
Lanny Michael Bergner  
Tom and Carla Bucknell  
Susan and Gerry Christensen  
Jim and Karen Dunlap  
Josie Emmons Turner  
Emily Ericson  
John and Roodi Hancock  
Mit and Maureen Harlan  
Elizabeth Hastorf  
Sue and Bill Henry  
Rich and Betsy Humphrey  
Stephen and Sheri Hunter  
Michelle Hurteau  
John Janicki  
Jeanne and Mark Johnson  
Mari and Rod Juntunen  
Anne Kinney  
Greg Kucera and Larry Yocom  
Craig Lemley and Cindy Scaringe  
John and Cynthia Lucke  
Gretchen McCauley  
Sandy McDade and Allison Kramer  
Moceri Construction, Inc.  
Paul Moceri and Susan Porter  
Nancy Nordhoff and Lynn Hays  
Simon and Carol Ottenberg  
Susan Parke and Dederick Ward  
Sina Pearson  
Meghan and Stan Rice  
Greg Robinson  
Betty Scott and Michael Tuttle  
Phil and Mary Serka  
Robert and Sandy Stark  
Dr. Mel and Leena Sturman  
Summit X Contractors  
Prentis David Sumrall and Maren Gribskov  
The Dale & Leslie Chihuly Foundation  
TRICO Companies, LLC  
US Bank Foundation  
Peter and Shannon van Oppen  
Jan Wherry  
John and Diane Wilkinson  
Britt-Mari and Richard Wisniewski  
Annette Woolsey  
Catherine and Keith Wyman  
Rob Zwick and Mary Kuebelbeck

### Friends of MoNA (\$500 — \$999)

Eileen Andersen and Richard Studebaker  
Jon, Ann and Deveren Bowman  
BrandQuery, LLC  
Michael Brown and Michelle McEachern  
Shari Burns  
Cassera Galleries  
Bert Clay and Carrol Hutchinson  
Steve Coleman



Dakota Art Pastels  
Sarah Dalton and Jeff Griffiths  
Guy and Sandra Davidson  
David Gray  
Ramon and Heidi Hayes  
Heritage Bank  
HKP Architects, PLLC  
Jim and Fiona Jackson  
Karen Kaufmann  
Kiwanis Club of La Conner  
Steve and Diana Klein  
Bruce and Debbie Lisser  
Tom Mansfield  
Carol and Bob Masters  
Matzke Fine Art Gallery & Sculpture Park  
Leslie and Steve Nordtvedt

### Friends of MoNA (\$250 — \$499)

Anonymous  
Kathryn Alexandra  
Colette and Andy Arvidson  
Craig and Katryna Barber  
Earlene Beckes and Kevin Haberly  
Loraine Boland  
Patti Brettell  
Brenda Brito Espinosa  
Olga Carlin  
Stefano Catalani  
Karin Clarke  
Joan Cross and Mike Thuot  
Arlene Sundquist Empie  
Alix Foster and Rick Shorten  
Bruce Funkhouser and Michelle Friars  
Helen Gamble  
Adeline Gildow  
Melinda Gouveia  
Norm and Cindy Haugen  
Oliver Iversen  
Mel Katz and Dianne Anderson  
Curtis Kemp and Carol Butler  
Charles and Margaret Kotal  
Bobbi Krebs-McMullen  
Thomas Kutt  
Jerry Sells and Linda Larson  
Mary Lindenberger  
Joan and Keith Magee  
Fr. Paul Magnano  
Polly and Doug Marsh  
Lindy Matthews and Joseph Johnson

Jim and Judy Orvik  
Kenneth Osborn  
Maggie and Josh Paul  
Herb and Lucy Pruzan  
Bill and Wendy Rabel  
Lorne and Judith Render  
Alexa and Tom Robbins  
John and Patricia Rose  
Caleb Sanders and Tamara Tregoning  
Carmen Spofford and Bruce Wick  
Bob and Betty Stott  
STUDIOEDISON  
D. D. Wigley

David McCrae and Suzanne Schweitzer  
MoNA Docent Association  
Ann Morris  
Louis Murillo and Cynthia Ledesma  
Museo Gallery  
Nils Paellmann  
Bob and Annette Parks  
Karen and Gary Parnell  
Megan Pearce  
Nancy and Mark Pellegrino  
Scott Petersen and Regan Weeks  
Justin & TessaRose Petersen  
Susan Radkins and Dennis Stanchfield  
Dick Reim  
Michael and Mary Louise Rust  
Julia Sesenbrenner  
Joanna Sikes  
Patricia Smith  
Elisa Kay Sparks  
Stephanie Sykes  
Marilyn Thostenson  
Tricia Tiano and Kent Mettler  
Patricia Watkinson  
AnnaLaurie Wattson-Lamb  
Douglas and Elaine Weisfield  
Suze Woolf

## Friends of MoNA (up to \$249)

Anonymous (7)  
Sheelagh and Mike Ackley  
Chris and Cynthia Adams  
Toni and Marty Adams  
Tori Adams  
Steve and Debbie Adelstein  
Anne and James Airy  
Steve Albright  
Dr. Steve and Deborah Aldrich  
Robert and Ali Alexander  
David Allen and Margaret Clements  
Mark and Haydee Allred  
Kathryn Altus  
Bill and Valerie Anders  
Gary and Jean Anderson  
Norman and Colleen Anderson  
Robert H. Anderson  
Tony Angell and Lee Rolfe  
Sir or Madam  
Joe and Billie Arellano  
James and Kathryn Armagost  
Doug and Pamela Armstrong  
Alfredo Arreguin and Susan Lytle  
John Baker and Mary Hedlin  
Judith Baker  
Sherry and Terry Barber  
Charlie Barbour  
Jimeny and Miriam Barger  
Elisabeth and Michael Bart  
Mary Alice Basye  
Mike Bathum  
Shannon Battle  
Frank Bayley  
Michelle Beach  
Tom, Gwyn, Aimee and Serena Beckwith  
Lynn Beebe and Bill Halstenrud  
Susan Bennerstrom and David Scherrer  
Erik and Jenny Benson  
David Grant Best  
Joline and Frank Bettendorf  
Coizie and Dr. Dicken Bettinger  
John and Bridget Billings  
Elizabeth and Steve Blake  
Ned and Julia Block  
Paul Blum and Alison Zak  
Teresa Bogart  
Janet Boguch and Kelby Fletcher  
William Booth and Ellen Haas  
Michael and Carol Boss  
Jay Bowen  
Kristen and John Boyes  
Marilyn Braarud and Karin Hasselberg  
Ellen Bradley  
Mary Brady  
Adriann Braiker  
Jane Brandt  
Leslie Brazeau  
Nancy Brighton  
John Brooks and Emily Schuwarick  
Tina Brown  
David and Kristine Buck  
Martha and Bill Bufkin  
Larry Bullis and Jane Alynn  
Joanne Burns  
John and Carol Burns  
Marilyn and Bill Burwell  
Art Butler and Judy Massong  
Suzanne Butler  
Jerlyn Caba  
B.J. Carol  
Barbara B. Carson  
Katie Carson and Chuck Groesbeck  
Chelsea Carter  
Jill and Dave Carter  
Cascade Clay Artists  
Robert and Jacqueline Chase  
Gina and Steve Chastain  
Ann Childs and Stephen Thornton  
Deborah Christensen  
Joan and Jon Christoffersen  
Linda Clarke and Lynn Dingler  
Sara Clarke  
Dionne Clasen  
Patricia Clausen  
Zayna and Garry Cline  
Linda Clingan and Michael Templeton  
Mary Clure  
LeeAnn Cochran and Jack Cullen  
Roger and Opal Cocke  
John Commeree and Kathy Fosnaugh  
Elaine and Mark Commins  
Richard Conover and Melodie Loughmuller  
Don and Margaret Coppock  
KC Cress and Eric Wallace  
Doug and Barb Crim  
Lois Crow

Denise Crowe and Bret Lunsford  
Nancy Crowell and Mike Carlisle  
Mark and Debby Cruver  
Tim Manns & Brenda Cunningham  
Fred and Mary Cutler  
Anita Davis  
Charles and Jonis Davis  
David Day and Gina Burrill  
Daniel Denny  
Suzanna Dentel  
Kathleen Develle  
Julia Diggs  
Alex Dixon  
David Docter and Alicia Dixon Docter  
Maureen Donnelly  
Kate Dougherty and Aaron Katz  
Patricia and Dr. George Downing  
Dee Doyle  
Pat Dubrow  
Kandis and Richard Dubuque  
Clara and Dave Duff  
Dunbar Gardens (Katherine Lewis)  
Tamsyn Dulap  
Lorin and Rui Dunlop  
Vasiliki Dwyer  
Patti Dynes  
Penny Eklund  
Paulette Elster  
Miklos and Barb Endrody  
Dorothy Ennes  
Marie and John Erbstoeszser  
Donald Erickson and Evelyn Yenson  
Larry and Nancy Erickson  
Marilyn Evans  
Pamela Faber  
Stephen Farmer  
Christine and Chris Farrow  
Ruth Fay  
Erika Ferguson  
Edward Flash  
Bill and Sandy Fly  
Philip and Sally Franzel  
Alex and Galina Free  
Terri and Joseph Gaffney  
Weng and Linda Gavino  
Brian and Alexis Gentry  
Karen Ghio  
John Glasson  
Peter Goldfarb

Kathleen Gowen  
Leslie Grace  
Jane Grafton  
Charles and Jeannie Gravenkemper  
Michael Griffith  
Vicki Gronvall  
Barbara Gross  
David Gruenewald  
Jane Gunterman  
Stuart Gustafson  
Alicia and George Guy  
Jackie and Brian Guy  
Marlene Hadley  
Leslie Hall and David Allison  
Patricia Halsell  
Laura Hamilton  
M. James and Margaret Hanson  
Patricia Harkleroad  
Bill and Kathleen Harmon  
James William Harrington  
Leslie Harrington  
Nicolette Harrington and Tim Hyatt  
Patricia Harris  
Charles and Nancy Hartness  
Jacalynn Havenstein and Cal Mathews  
Beverly Haywood  
Bunny Heiner  
Geraldine Henriot  
Lloyd Herman  
Jeffrey Highland  
Edith Hilliard  
Marilyn Hollenback  
Mildred Holtcamp  
Gail and Stephen Hopley  
Jane and Dave Hruby  
Julia and John Hurd  
Steven Ihde  
Susan and Frederick Ingham  
Wendy Jackson  
James R. Dunlap Esq  
Michael and Rita James  
Lezlie Jane  
Jack and Eleanor Jaye  
David and Katherine Jensen  
Eleanor and David Johnson  
James L. Johnson and Marilyn Kenney  
Rick and Cindy Johnson and Jana Gardiner  
Sam Johnson and Melody Allen  
Julie Jones

Ann and Rick Kaiser  
John and Julie Kane  
Mutende and Kaley Katambo  
Suzanne and Armen Kazanjian  
Charlie K'Burg  
Diane Keller  
Berit Kenin  
Marjorie Kilbreath  
Sally Kilpatrick  
Kinahan-Guise  
David Kingsbury and Deborah Smeltzer  
Clyde Kirkman and Jerene Merritt  
Marlene and Greg Kleven  
Jeanne Kleyn and John Black  
Susan and Pockets Knipe  
Liz Knowles and Elise Johnson  
Sabrina Knowles and Jenny Pohlman  
Kate Kondrak  
Vicki and David Kremers  
Sandra Krot  
Alice Kunkel  
La Conner Weekly News  
Richard and Lyn Lacher  
Peggy Larson  
Nan and Ken Leaman  
Kristine Leander  
Wynne and William Lee  
Patricia Leigh  
Mary Leone  
Michael Jay Levin and Carol Schapira  
Marge Levy and Larry Lancaster  
Michele and Robert Liburdy  
Nancy Liggett  
James Lilly and Heather Allen-Lilly  
Dale Lindman  
Bruce Lindsay  
Sue and Rick Little  
Patricia Lodge  
Valerie Long  
Jacquelyn Loree and Christopher McGinnis  
David Lotz and Peggy Printz  
Thomas and Sharon Lovejoy  
Elaine and Vern Lovelace  
Janet Lowry  
George and Elizabeth Lundgren  
Norman Lundin and Sylvia Johnson  
Tom and Joanne Lynn  
Jim and Terry MacDonald  
Nancy and Mike Maggart

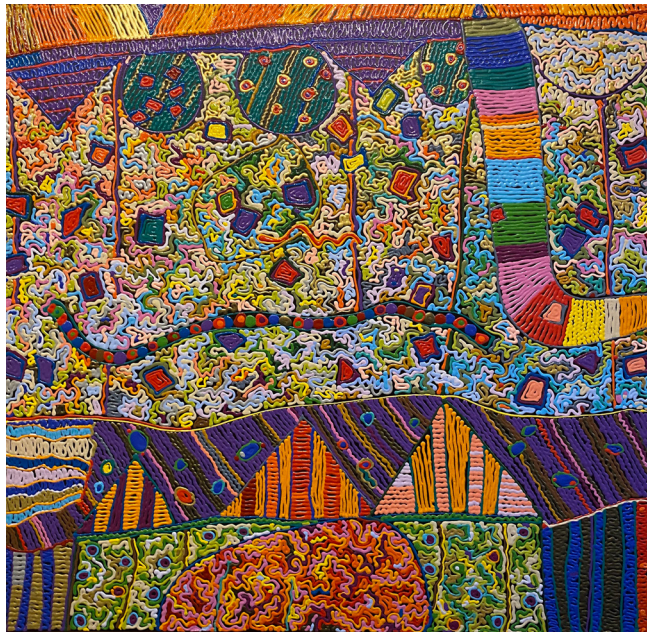
Mark Magill and Barry Schiess  
Dan Mahler  
Breta Malcolm  
Rose Mallon and Bob Horton  
Susanne and Eugene Marckx  
K.K. Marske  
Maxine Martell  
David Mascarenas  
Mayra Mateo  
Christopher Mathie and Chuck Gumpert  
Dorothy Matsu  
George and Alice McCain  
Jerry McCool and Michele Fremont  
Betty McCoy  
Laurence McCulloch and William Hayton  
Linda McJunkin  
Anna and Paul McKee  
David McKibben and Kate Lange McKibben  
Ann Mendershausen  
Barbara Metch  
Anne and Jack Middleton  
Margaret Miller Havas  
Jim and Margy Miller  
Joan Miller  
Marilyn Miller and Sabrina Sadler  
Marilyn J. Miller  
Pamela Mills and William Corr  
Mitch and Marisa  
Anthony and Jane Mitchell  
Mitch Mitchell and Barbara O'Steen  
Janine Moden  
Liz Moncrief  
Donna Moniz  
Bud and Lynn Moore  
Frances and Richard Moore  
Nati Moran  
Kate Morrison Johnson and Richard Lee  
Johnson  
Diane Morton and Wendy Cobb  
Kit Muehlman  
Bobbie Mueller  
Joseph Mulcahy and Anthony Young  
Donald and Lynn Murphy  
Thomas Murray  
Mary Ann Musgrove  
Donald Myhre  
Barbara Nash  
Richard and Sherry Nash  
Anjanette Nelson-Wally

Ellen and Alan Newberg  
Mary and Don Newby  
Delight and Michael Newlight  
Bettina and Michael Nordby  
Katherine Norris and Frank Del Gaudio  
Kenneth Obeso and Jana Flanary  
Jeffrey O'Boyle  
Marko and Yoshi O'Connor  
Joanne and Gordon Odegaard  
Taylor Ohl  
Carla Okigwe  
Kimberly and Dale Oldis  
Marilynn and Bob Olson  
Linda and Perry Olsson  
Lena Omnell  
Jackie O'Neil  
Sally Pagh  
Lorna Parent  
Laurence Parker  
John and Carol Parks  
Daina Parsons  
Cynthia and James Patereau  
Jan Paul and Rindec Ashcraft  
Julia Paulsen and Kevin O'Conner  
Christina Pearson  
Karen Peck  
Constance Perenyi  
Suzanne Perlmutter  
Raymond Perrigoue  
Ellen C. Pfeifer and Daniel M. Polvere  
Joani Pfeiffer  
Claire Phillips  
Renee and Kenneth Phillips  
Tracy and Maralyne Powell  
Dyann Provenzano  
Mary and Steve Purcer  
Megan Pursell  
Karen and Richard Raisler  
Kenneth and Janet Ramble  
Mark and Micael Raphael  
Stan Richardson  
Terah Regan and Celeste Rivers  
Ann Reid and Tom Theisen  
Tammy and Rachel Reim-Ledbetter  
Clayton G. Reinhardt  
Christine and Mark Reis  
Patricia Resseguie  
Debra Revere and Paul Schwartz  
Casey Riske and Cecilia Matta

Véronique Robigou-Nelson and Bruce Nelson  
Frances Robinson  
Paul Rosasco and Winnie McNamara  
Daniel Rosenfeld and Tricia Allen  
Andrew Ross  
Suzanne and Dale Roundy  
David and Mary Rytdand  
Sharon Sackett  
Yoshiko Saheki  
Paul and Rebecca Sandall  
Brett Sandstrom  
Virginia Sanford  
Norie Sato and Ralph Berry  
Gregory Saupe  
Dorothy Saxe  
Joan and Clark Scarborough  
Casey and Susan Schanen  
Fred Schram and Brian Kirkpatrick  
Susan Schwasnick  
Noah and Kate Scooler  
Scott & Laura Breckenridge  
Dean and Calista Scott  
Lynn and J. Randolph "Rand" Sealey  
Howard and Kathy Shapiro  
Marcy Shapley and David Allan  
Carrie and Troy Shaw  
Ernest Sherman and Tisha Taylor  
Mark Siegel and Tera La Fleur  
Karen Sims Deady  
Duane Simshauser  
Gloria Sinclair  
Joyce Siniscal  
Maureen Skomerza  
Betty Sloan  
Linda Smeins  
Brad Smith and Dale Fournier  
Christine and Chris Smith  
Nicholas Smith  
Han So  
Katherine Sodergren  
Sheila Sondik and Paul Sarvasy  
Steven Soos  
Marcus Sorenson  
Judy Sorrel  
Ann Springgate  
Jeronimo Squires and Kay Reinhardt  
Arlene Stavig  
Crane Stavig

Scott Stewart  
Jackie Stone  
Richard and Daphne Storwick  
Buck Striegel  
Donna Swartz  
Kate Szurek  
Ann Tanner  
Elizabeth Tapper  
Carol Tarr  
Carol Taylor and Tom Carson  
Christopher Taylor  
Cheryl Jones Telford  
Linda Tennant  
Rod Terasaki and Beth Mueller  
The Mohr Family  
Harley and Elizabeth Theaker  
Jan and Bob Tivel  
Robin Tracy  
Maureen Traxler  
Sam and Anne Turner  
Bruce Underwood  
Lucy Mae and Pieter VanZanden  
Lindsey and Jan Vereen  
Tim and Nancy Vogel  
Jonathan Waddell  
Jane Wagner and Heather Klawer  
Duff and Elise Walker  
Randena Walsh  
Stan Walsh  
Steve and Kathryn Wang  
Philip and Debra Ward  
Carol Warren  
Donna and John Watson  
Charlotte Watts  
Curtis Webb  
Jan Weedman  
Kristine Weisbrod  
Dick Weiss  
Ron and Jan Wesen

David Wesley and Barbara Pomeroy  
Roger Wheelis  
Nancy and Larry White  
Gregory Whiting and Jenelle Turner  
Solveig Whittle  
Don Wick  
Holly and Dave Wight  
Brom and Anne Wikstrom  
Barbara and Michael Williams  
Dave and Joyce Williams  
Jude Williams  
Jerry and Kathy Willins  
Ann and Roy Wilson  
Donna Wolter  
Dianne Woodruff  
T. J. Woosley  
William and Jennifer Woyski  
Derek and Selina Wyman  
Virginia, Ann & Deehan Wyman  
Marvin Yamaguchi and Dianne Graham  
Cynthia Yee  
Karen Zagona and Heles Contreras  
Margaret Ziegler  
Maureen Zopf and Amalie Hovey  
Jacklynn Zorich



**IMAGE**—(Clover and backcover image) Alden Mason, *Snake in the Garden of Eden*, 1980, acrylic on canvas  
Gift of Robert and Shaké Sarkis, MoNA Northwest Art Collection

# LEGACY SOCIETY

MoNA thanks, recognizes, and honors the following benefactors who have invested in MoNA's future through deferred giving.

**Eileen Andersen & Richard Studebaker**  
**Lanny Bergner**  
**Marge Bickel**  
**Robert Bragg**  
**Sherry Chavers**  
**Sarah & Bob Christensen**  
**Jon & Joan Christoffersen**  
**Charles & Jonis Davis**  
**Jack Dewayne Clay**  
**Chris & Allen Elliott**  
**Miklos & Barb Endrody**  
**Michelle Hurteau**  
**Janet Huston**  
**Gerald Jordheim**  
**Marda & Greg Kaiser**  
**John & Cynthia Lucke**  
**Susan Parke & Dederick Ward**  
**Jane & Joe Pepia**  
**Mimi Pierce**  
**Katherine Sodergren**  
**Bruce Wick & Carmen Spofford**  
**Gloria Wampler**  
**Margaret Ziegler**

One of the easiest ways to make a planned gift to MoNA is through a simple bequest. You may designate MoNA as a beneficiary in your will, living trust, retirement plan, or life insurance policy - whatever works for you. To learn more about planned giving, contact your financial advisor, planner, or bequest attorney. Your legacy has a lasting impact on our mission that extends beyond a lifetime.

Please let MoNA know when you name it as beneficiary. It is essential, for in cases where MoNA is designated as a beneficiary in a retirement plan account, retirement plan custodians have no legal obligation to inform beneficiaries that the plan holder has passed away.

**Contact:**  
(360) 466-4446 X 104  
development@museumofnwart.org

While every effort is made to ensure that our supporter information is accurate, we apologize for any errors and ask that you please contact us with any corrections: (360) 466-4446 X 103, development@museumofnwart.org

**IMAGE**—(Clover and backcover image) Alden Mason, *Snake in the Garden of Eden*, 1980, acrylic on canvas (detail), gift of Robert and Shaké Sarkis  
MoNA Northwest Art Collection



Museum of Northwest Art

P.O. Box 969, 121 South 1st Street, La Conner, WA 98257

(360) 466-4446 | [monamuseum.org](http://monamuseum.org)