

# MoNA

Museum of Northwest Art

## Surge:

*Mapping Transition,  
Displacement, and Agency in  
Times of Climate Change*



Melinda Hurst Frye, *Regeneration I*, 2023,  
Photograph (archival digital print), 40" x 50"

An exhibition drawing attention to climate change and its tangible effects on the Northwest's Coastal communities, created in partnership with the Skagit Climate Science Consortium and curated by Chloe Dye Sherpe.

**October 14, 2023 - January 21, 2024**

# A Partnership with 20 Artists & Skagit Climate Science Consortium

## Surge 2023 Artists

Aaron Loveitt  
Amanda Manitach  
Ann Chadwick Reid  
Buster Simpson  
Cara Jaye  
Crista Matteson  
David Willis  
Jackie Qataliña Schaeffer  
Kandis Susol  
Karen Hackenberg  
Lisa McShane  
Lucia Enriquez  
Mary Coss  
Melinda Hurst Frye  
Natalie Niblack  
Nina Vichayapai  
Sasha Petrenko  
Tesla Kawakami  
Todd Horton  
Tori Karpenko

## Collaborating Scientists

Adam Griesemer  
Andy Bunn  
Bob Michell  
Dale Durran  
Dave Peterson  
Gary Pascoe  
Guillaume Mauger  
Jamie Donatuto  
John Bower  
John Rybczyk  
Jon L. Riedel  
Roger Fuller  
Terry Niblack  
Wes Lauer



# Questions & Artist Quotes

This guide provides open-ended questions that **encourage conversation** and ask the viewer to

- consider interpretations of data,
- verbalize personal observations,
- and to share knowledge with others.

Artist quotes are provided to share insights, ideas and inspirations that resulted in the work on display. *Surge* is a collected effort among scientists, educators, and artists to link changes and impacts such as rising sea levels and changing river flows with how these affect the ecosystem we live in and depend upon. Through art, forms and forces are modeled to express a sense of urgency and a shared spirit of hope because of the possibilities for mitigation and adaptations to our changing environment.

The exhibition invites curiosity about the interconnectedness of systems in nature that are affected by humans. *Surge* offers the opportunity for that curiosity to result in greater awareness that can lead to community efforts to inspire change.



Nina Vichayapai, *Restoration of the Fir Island Farms Estuary*, 2023, Hand sewn fabric on wood panel, 144" x 48" x 1"



# What is Climate Change?

Discuss the elements of our climate. Talk about the components of climate that change with increasing energy use.



Tori Karpenko, *Vessel for All That Remains*, 2021, Acrylic on reclaimed wildfire remnant, 90" x 52" x 48"

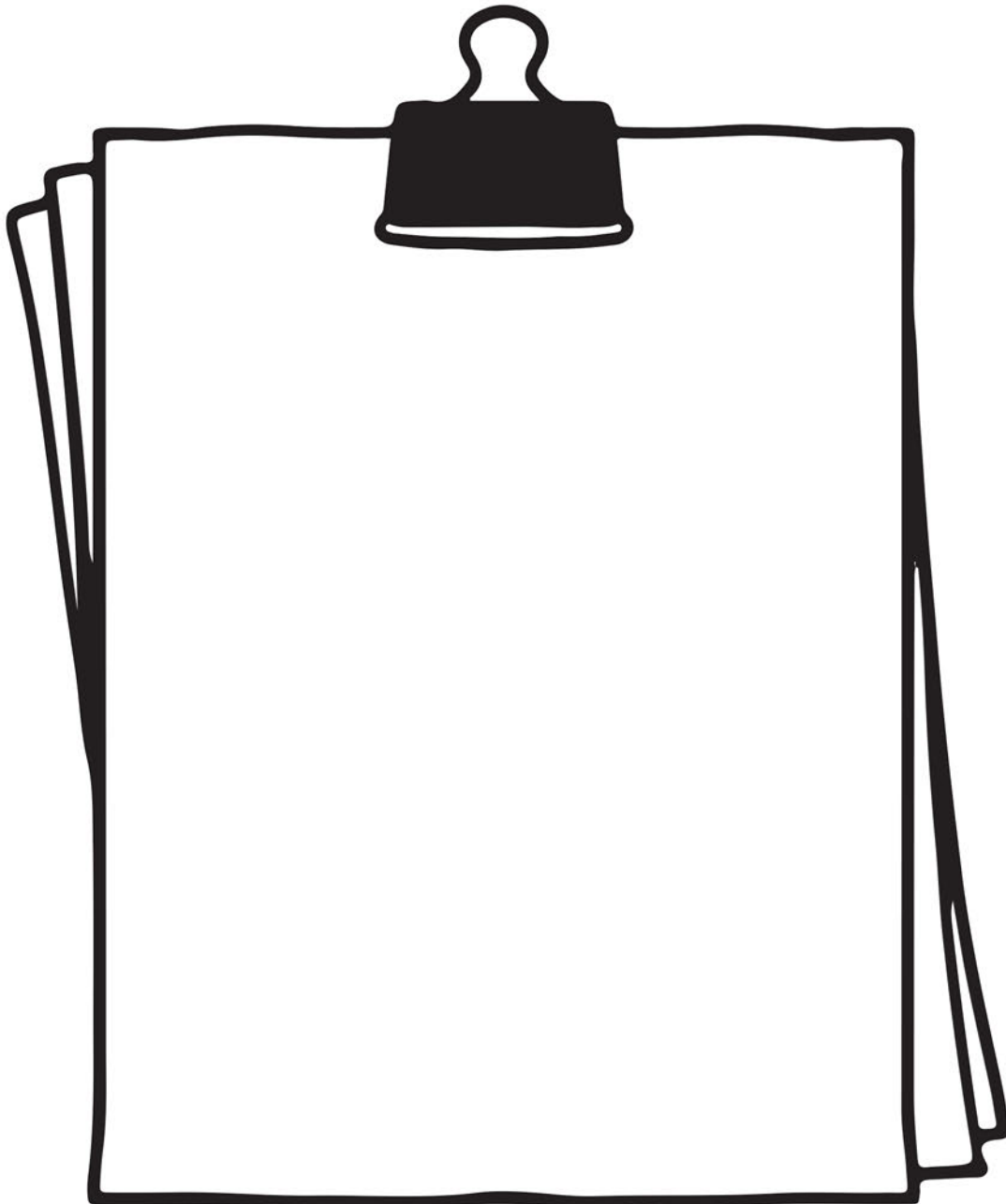
***"We have lost a great deal and are entering a time of climate uncertainty where we will likely lose more. This sculpture is a vessel for all that remains. May we use our time on this planet wisely."***

- Tori Karpenko, *Vessel for All That Remains*, 2021

# What is responsible for climate change and how do we know?

How do scientists determine that the climate has changed over time?

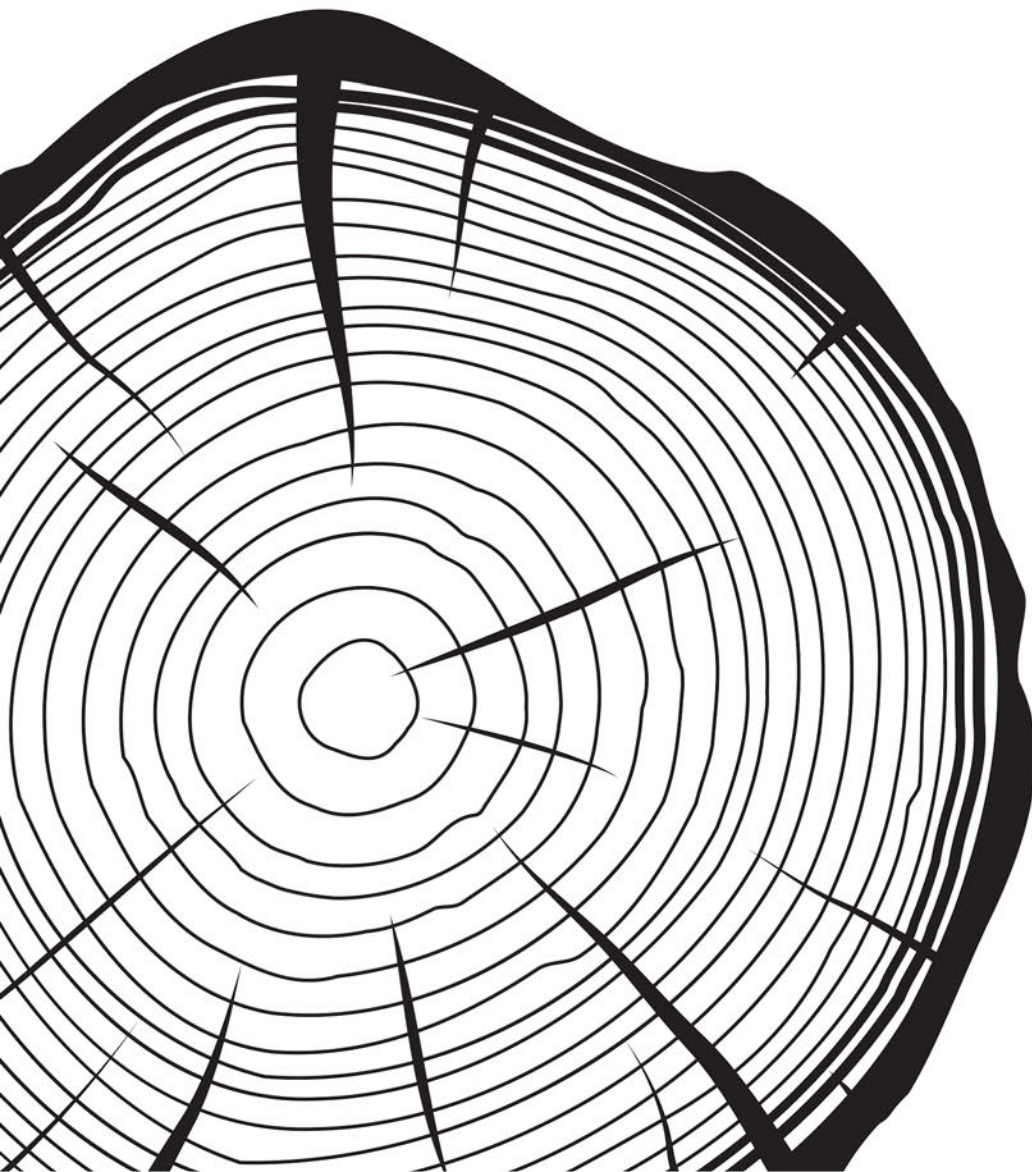
List sources of evidence used to chart climate change you find in the exhibition.





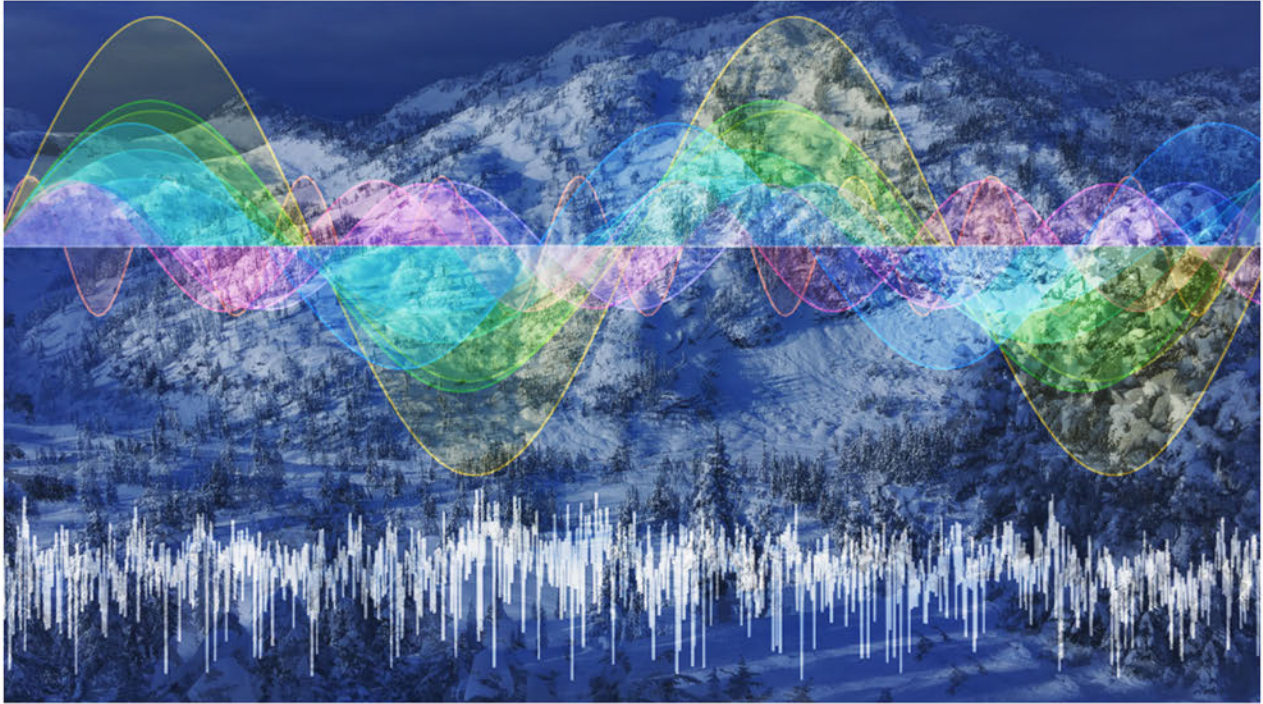
# One Source of Climate Data: Tree Rings

Trees are solar powered data recorders, growing tree ring widths through good times and bad. Scientists use tree-ring patterns to quantify relationships between ring widths and precipitation. Starting with a period for which weather records are available, they can use tree-ring patterns to estimate precipitation in the more distant past. Scientists can reconstruct a continuous tree-ring chronology dating back thousands of years using archaeological artifacts. *Because of trees longevity, tree-rings have a key role in determining climate patterns over the past centuries and even millennia, providing a baseline for current climate trends.*





**Dendrochronology:** The science of dating events, environmental change, and archaeological artifacts by using the patterns of annual growth rings in trees.

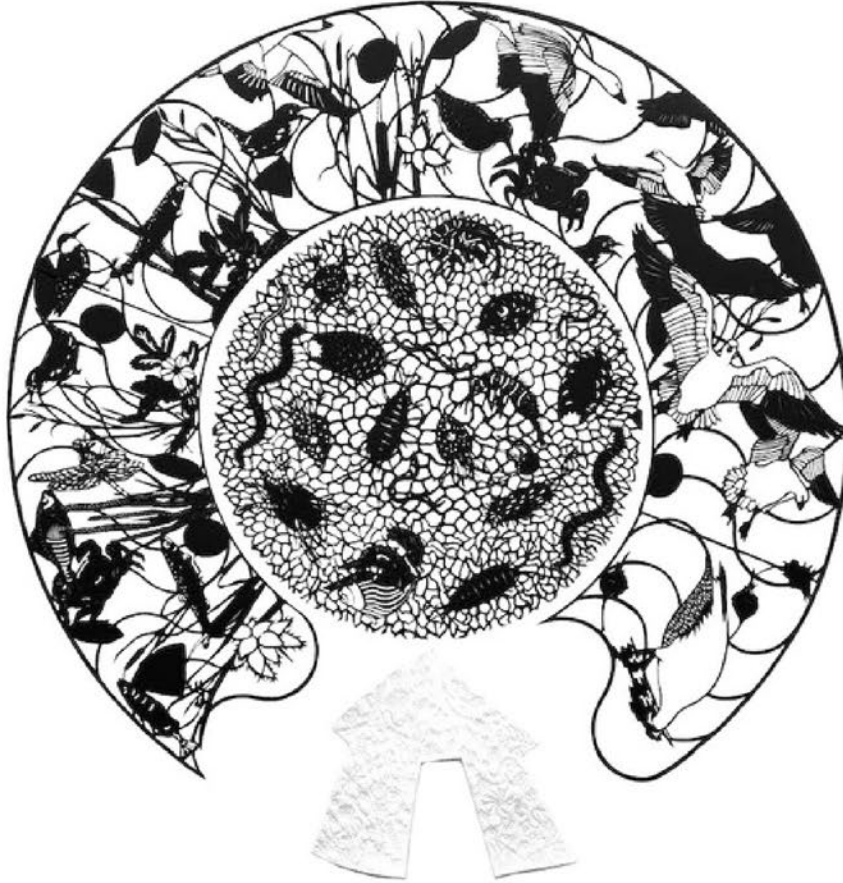


Sasha Petrenko, *Arboreal Messengers: Forest Time Water 1549 - 2049*, 2023, Wood, cast metal, tree core samples, electrical wire, capacitive sensors, speakers, sound, software, video, 8' x 10' x 8'

***“There are multiple timescales in the forest.  
Time folds over. The past is present, and the present is future.  
You can travel back by reading tree rings and know how we unmade  
our world.  
Or travel forward knowing what we know now. What might this  
future forest say?  
What is it trying to tell us? We need to listen.  
Because now we know, as the forest goes, we go.”***  
- Sasha Petrenko, *Arboreal Messengers: Forest Time Water 1549-  
2049*, 2023

# Why does climate change matter?

What is the impact of climate change on environmental, biological and social systems?



Ann Chadwick Reid, *Tideflat Plunder*, 2023, Hand cut paper, pencil, quilted fabric, 70" x 72"

***“The interconnectedness of nature's organisms is complex and beautiful. For dynamic systems like a tidal wetland food web, both the seen and unseen are an integral part of forming the quality of our lives by managing water systems, cleaning polluted waters, storing floodwaters, recharging groundwater, and supporting habitat for native plants and animals. Tideflat Plunder is a narrative of what is occurring in the wetlands on Fir Island. Across the country and the world, coastal, inland, and freshwater wetlands all face the ravages of global warming. Yet as the planet warms, who are the real marauders?”***

***-Ann Chadwick Reid, *Tideflat Plunder*, 2023***





Tesla Kawakami, *If The Tide Came and Stayed*, 2023, Oil on acrylic, 76" x 52"

***"My paintings depict scenes of destruction caused by climate change with a visual static that simultaneously overwhelms and intrigues, encouraging viewers to get close and curious with realities they may otherwise choose to ignore."***

- Tesla Kawakami, *If The Tide Came and Stayed*, 2023

# How are other vulnerable populations besides humans affected by climate change?

Can you imagine yourself as one of the animals or plants depicted in this exhibition?



Natalie Niblack, *Spotted Owl, Mountain Bluebird, Pine Grosbeak*, 2023, oil on linen, 18"x18"

***"66 Birds/3 Degrees is intended as an informed warning of what is at risk, not as a statement of what will be."***

-Natalie Niblack, *66 Birds/3 Degrees*, 2022-2023



What do you think these birds are singing about?



# What can we do?

**What can humans do to slow or reverse climate change?**

Scientists use clear, powerful language to express information and are not afraid to ask questions. Scientists constantly seek understanding and knowledge.

Use these words to write about a climate change strategy that could cut carbon emissions:

**Resilience:** *The capacity of an environmental or human system to cope with and recover from a disturbance or extreme event (including those caused by climate change).*

**Adaptation:** *The process of adjusting to actual or projected climate and its associated effects, including with human intervention to facilitate the adjustment.*

**Mitigation:** *Human intervention to reduce greenhouse gas emissions or enhance the storage of greenhouse gases (e.g., carbon dioxide).*



Global climate change and its impacts on people and resources pose serious societal challenges. The actions we take today will influence future greenhouse gas emissions and the magnitude of warming; they will also affect our ability to respond and adapt to changes, and to reduce the vulnerability of people and places that will be harmed. Educating ourselves about the causes and effects of global climate change is imperative since implementing solutions depends on an informed public –for both societal and individual level actions. Awareness of climate change impacts will motivate new ways of innovation and intensify reforms.

*Support for this exhibition and education programs is made possible by our members and in part by:*

THE NORCLIFFE  
FOUNDATION

 Seattle City Light

 PSE  
PUGET  
SOUND  
ENERGY



MEDIA SPONSORS: **Crosscut.** | A service of **CASCADE PUBLIC/MEDIA** **KCTS9**

## Upcoming Events & Workshops

**Origami with Recycled Materials**

**SATURDAY, OCTOBER 21**

10:30 am - 1:00 pm | \$30

**Sea Level Rise Workshop:  
Climate Resiliency**

**SATURDAY, OCTOBER 28**

1:30 - 3:30 pm | Free

**Government & Resiliency  
Panel**

**SATURDAY, NOVEMBER 4**

1:00 - 2:30 pm | Free

**An Introduction to  
Imagemaking**

**SATURDAY, DECEMBER 2**

1:00 - 3:00 pm | \$30

**My Adult & Me: Painting Class  
w/ Laura Parker**

**SATURDAY, DECEMBER 16**

11:00 am - 1:00 pm | \$30

**Luminary Globe Workshop**

**SATURDAY, JANUARY 6**

10:00 AM - 3:00 pm | Free

**e(ART)h: Reciprocity and  
Resilience in the Age of  
Climate Change**

**SATURDAY, JANUARY 13**

1:00 - 4:00 pm | \$35

**Community Closing: Talk & Art  
Making Event**

**SATURDAY, JANUARY 20**

1:00 - 4:00 pm | Free



**RSVP FOR THESE  
EVENTS:**

[monamuseum.org/  
/events](https://monamuseum.org/events)

*Members get 10% off  
all paid workshops*



**BECOME A  
MEMBER**

**TODAY! VISIT  
US AT:**

[monamuseum.org/  
membership](https://monamuseum.org/membership)